

North Carolina Municipal and County Parks and Recreation Services Study

Fiscal Year 2006-07

Executive Report



NC Division of Parks and Recreation



January 28, 2007

To all Park and Recreation Agencies participating in the
Municipal and County Parks and Recreation Services Study, Fiscal Year 2006-07

Thank you for taking time away from your busy schedules to complete the Municipal and County Parks and Recreation Services Study, Fiscal Year 2006-07. The information you provided will aid all leisure service professionals in North Carolina.

Please accept this **North Carolina Municipal and County Parks and Recreation Services Study, Fiscal Year 2006-2007: Executive Report** in appreciation for your concerted effort and professional dedication. If you have any comments or questions concerning this study, please contact Recreation Resources Service, Washington Area Regional Office, (252) 946-6481. Not all agencies that responded to the study were included in the results because of time constraints or incomplete survey forms. The results from this study, including an agency searchable database, will be provided to each RRS consultant. This information will be available in Portable Document Format (PDF) on the RRS World Wide Web site at http://cnr.ncsu.edu/rrs/services_study.html

Once again, thank you for your efforts. The strength of this document remains the effort, information and dedication of each participating agency.

Recreation Resources Service
North Carolina State University

Study coordinated by Dr. Dallis Tucker

Table of Contents

	PAGE
Letter of Transmittal	i
Table of Contents	ii
Table of Tables	iii
Table of Figures	vii
Executive Report	
Acknowledgement	1
Introduction	1
Methods	1
Organization	3
Description of Population Categories	5
Limitations	10
Expenditure Information - Major Changes - 2006-2007	12
Per Capita Expenditures - Major Changes - 2006-2007	15
Acreage and Park Inventory	17
Recreation Inventory	23
Facilities of Special Interest	34
Contractual Agreements	40
The Future	41
Appendix A – Major Change 2004-2005 Audited Operating and Capital Expenditures by Individual Agency	42
Appendix B – Major Change Audited 2004-2005 Per Capita Expenditures by Individual Agency	47
Appendix C – New Budget Differences, Percent of Change and Total Government Budget	52
Appendix D Means and Medians	55

Table of Tables

	PAGE
Table 1 2006-07 MCPRSS Sample Representation by Population Category	10
Table 2 2006-07 MCPRSS Sample Representation by Geographic Region	11
Table 3 2006-07 MCPRSS Sample Population Category by Geographic Region	11
Table 4 Total Reported 2004-2005 Expenditures for All Local Parks and Recreation Departments in North Carolina	12
Table 5 Total Reported 2004-2005 Expenditures for the Entire State of North Carolina	12
Table 6 Parks and Recreation 2004-2005 Audited Operating and Capital Expenditures by Department Type	13
Table 7 Parks and Recreation 2004-2005 Audited Operating and Capital Expenditures by Region	13
Table 8 Reported Mean and Median Audited 2004-2005 Operating and Capital Expenditures by Agency Type/Population Categories	14
Table 9 Reported Mean and Median Projected Per Capita Expenditures by Geographic Region	16
Table 10 Reported Acres of Owned Park and Recreation Lands	17
Table 11 Reported Mean and Median Per Capita Expenditures by Geographic Region	20
Table 12 Park Type, Maintenance Staff and Size A Departments	20
Table 13 Park Type, Maintenance Staff and Size B Departments	20

	PAGE
Table 14 Park Type, Maintenance Staff and Size C Departments	21
Table 15 Park Type, Maintenance Staff and Size D Departments	21
Table 16 Park Type, Maintenance Staff and Size E Departments	21
Table 17 Park Type, Maintenance Staff and Size F Departments	22
Table 18 Indoor Facilities	23
Table 19 Outdoor Facilities	23
Table 20 Cultural Facilities	24
Table 21 Single-Use Fields & Courts	24
Table 22 Multi-Use Fields & Courts	25
Table 23 Golf Course Facilities	25
Table 24 Swimming Pools	25
Table 25 Natural Swimming Areas	26
Table 26 Outdoor Aquatic Support Facilities	26
Table 27 Overnight Accommodation Facilities	26
Table 28 Single-Use Trails (Pedestrian Recreation)	27
Table 29 Single-Use Trails (Pedestrian Fitness)	28
Table 30 Single-Use Trails (Pedestrian Nature)	29

	PAGE
Table 31 Single-Use Trails (Bicycle Only)	30
Table 32 Single-Use Trails (Equestrian Only)	30
Table 33 Single-Use Trails (Trails for Physically Challenged)	30
Table 34 Single-Use Trails (Canoe/Kayak)	31
Table 35 Multi-Trails (Pedestrian, Bike, Equestrian)	31
Table 36 Multi-Trails (Pedestrian, Bike, In-Line Skate)	32
Table 37 Greenways	33
Table 38 Dog Parks	34
Table 39 Climbing Walls (Outdoors)/Rope Courses	34
Table 40 Disc/Frisbee Golf Courses	35
Table 41 Skate Areas (Ice Skating)	35
Table 42 Skate Areas (Skateboard Parks)	36
Table 43 Golf Driving Ranges	36
Table 44 Miniature Golf Courses	37
Table 45 Par 3 9-Hole Courses	37
Table 46 9-Hole Executive Courses	37
Table 47 18-Hole Courses	37
Table 48 18-Hole Championship Courses	38

	PAGE
Table 49 Indoor Swimming Pools	38
Table 50 Waterslides	38
Table 51 Therapy Pools	39
Table 52 Spraygrounds	39
Table 53 Facilities Owned by Park Department That Are Managed Or Operated through Agreement with Another Agency/Association	40
Table 54 Capital Improvement Plans by Community Size	41
Table 55 New Employees Needed by Community Size	41
Table 56 Acres Needed by Community Size	41

Table of Figures

	PAGE
Figure 1 MCPRSS Geographic Regions	3
Figure 2 MCPRSS Respondents by Geographic Region	5
Figure 3 MCPRSS Respondents by Population Class	13
Figure 4 2004-2005 Reported Expenditures for All Local Government Park and Recreation Departments in North Carolina	13
Figure 5 Historic Projected Per Capita Expenditures Reported from the Sample for Local Government Parks and Recreation in North Carolina	15
Figure 6 Types of Park Reported by Percentage	19
Figure 7 Types of Agreements for School Parks	22
Figure 8 Types of Facilities Managed through Contractual Agreement	40
Example 1 Sample with Normal Distribution	55
Example 2 Sample with a Nonsymmetric Distribution	56

Municipal and County Parks and Recreation Services Study, Fiscal Year 2006-2007: Executive Report

Acknowledgment

Recreation Resources Service (RRS) greatly appreciates the time and effort each park and recreation department allotted to completing the survey. RRS understands the survey places a significant demand on the time of these agencies. Hopefully, the Municipal and County Park and Recreation Services Study (MCPRSS) provides an invaluable resource to enhance the leisure services delivery for the agency and community. As always, the strength of the document remains the determined effort, detailed information and meticulous care the practitioner devotes to completing the survey. Any comments or suggestions concerning this report are encouraged and welcomed.

Introduction

Each year the MCPRSS attempts to determine the current status of local government parks and recreation departments in North Carolina. The report seeks to provide information to all local governments and park and recreation agencies to use in evaluating current services. The report also strives to assist leisure services in budget planning, preparation and justification.

The MCPRSS, fiscal year 2006-07, marks the 57th year of assessment for municipal leisure service providers. This edition also marks the 37th year of assessment for county leisure service agencies. The MCPRSS for this fiscal year reviews operating and capital budgets, personnel salary ranges, and revenue sources.

The MCPRSS offers leisure service managers and administrators an important tool for:

- Tax-supported funding trend analysis based upon changes in operating budget funding levels from year to year.
- Comparing park and recreation facilities for similar communities to evaluate level of service.
- Reviewing the types of facilities utilized by park and recreation departments through cooperative agreements.

Recreation Resources Service hopes this study will enable managers and administrators to make wise, informed decisions on the operation of their agencies and the delivery of leisure services to their clientele.

Methods

In August of 2006, the MCPRSS survey report was mailed to 219 recognized local government park and recreation departments. One hundred and four (105) responses were received by October of 2006 for a response rate of 47.95%. Northampton County and Fayetteville-Cumberland County returned their applications after the final deadline and were not used.

A follow-up mailing was sent to all agencies not responding by September 8, 2006, and phone calls were made to encourage response through October 2006. The response rate difference between MCPRSS fiscal year 2005-06 and MCPRSS fiscal year 2006-07 represents an **increase** of **.46%** (see Limitations). Data collected from returned surveys was entered into a FileMaker Pro database. The descriptive statistics (means, medians, and frequencies) utilized in the executive summary were calculated with Microsoft Excel.

This executive summary is available as an Adobe Acrobat file and available for download from the RRS Online Publication Section. The web location is:

http://cnr.ncsu.edu/rrs/services_study.html

The following agencies did **not** respond to the MCPRSS, Fiscal Year 2006-07:

Municipal:

Aberdeen, Ahoskie, Albemarle, Andrews, Angier, Belhaven, Belmont, Bessemer City, Boiling Spring Lakes, Chapel Hill, Cherryville, Concord, Cornelius, Dunn, Emerald Isle, Erwin, Fletcher, Forest City, Fuquay-Varina, Granite Falls, Hamlet, Holly Springs, Hudson, Kenly, LaGrange, Landis, Lenoir, Lillington, Lincolnnton, Louisburg, Maiden, Marshville, Monroe, Morehead City, Morganton, Mount Holly, N. Wilkesboro, Nashville, New Bern, Norwood, Old Fort, Oxford, Pinebluff, Pineville, Randleman, Robersonville, Rockingham, Scotland Neck, Siler City, Smithfield, Southern Pines, Southport, Spindale, Spring Lake, Spruce Pine, Stanley, Tabor City, Tarboro, Valdese, Wallace, Warsaw, Wilkesboro, Wilmington, Wilson, Winterville.

County:

Alamance, Alexander, Alleghany, Anson, Ashe, Bladen, Buncombe, Caswell, Chatham, Cherokee, Clay, Columbus, Craven, Dare, Davidson, Duplin, Forsyth, Franklin, Gates, Graham, Greene, Harnett, Henderson, Jackson, Jones, Lincoln, Macon, Madison, Moore, Northampton, Pamlico, Pender, Perquimans, Polk, Richmond, Rutherford, Stokes, Wake, Washington, Yadkin, Yancey.

Combination:

Fayetteville-Cumberland, Kinston-Lenoir and Bryson City-Swain.

Organization

The MCPRSS data are provided for both population served and geographic region. The leisure needs of and service delivery to mountain communities differ from those of coastal communities of comparable size. The geographic regions represent five distinct regions of North Carolina; Northeast, Piedmont, Southeast, West-Central, and Western.

Figure 1. MCPRSS Geographic Regions



Northeast Region:
 Beaufort, Bertie, Camden, Chowan, Currituck, Dare, Edgecombe, Gates, Halifax, Hertford, Hyde, Martin, Nash, Northampton, Pasquotank, Perquimans, Pitt, Tyrrell, Warren, Washington, Wilson

Piedmont Region:
 Alamance, Caswell, Chatham, Cumberland, Durham, Franklin, Granville, Guilford, Harnett, Hoke, Johnston, Lee, Montgomery, Moore, Orange, Person, Randolph, Rockingham, Vance, Wake

Southeast Region:
 Bladen, Brunswick, Carteret, Columbus, Craven, Duplin, Greene, Jones, Lenoir, New Hanover, Onslow, Pamlico, Pender, Richmond, Robeson, Sampson, Scotland, Wayne

West-Central Region:
 Alexander, Alleghany, Anson, Ashe, Cabarrus, Catawba, Davidson, Davie, Forsyth, Gaston, Iredell, Lincoln, Mecklenburg, Rowan, Stanly, Stokes, Surry, Union, Watauga, Wilkes, Yadkin

Western Region:
 Avery, Buncombe, Burke, Caldwell, Cherokee, Clay, Cleveland, Graham, Haywood, Henderson, Jackson, Macon, Madison, McDowell, Mitchell, Polk, Rutherford, Swain, Transylvania, Yancey

Reporting agencies in each geographic region include:

Northeast

Bertie County Parks & Recreation
 Currituck County Parks & Recreation
 Edenton-Chowan Parks & Recreation
 Elizabeth City Parks & Recreation
 Farmville Parks Department
 Greenville Recreation & Parks
 Pasquotank County Parks & Recreation

Pitt County Community Schools & Recreation
 Roanoke Rapids Parks & Recreation
 Rocky Mount Parks & Recreation
 Warren County Parks & Recreation
 Washington Parks, Recreation & Civic Center
 Williamston Parks & Recreation

Piedmont

Apex Parks, Recreation & Cultural Resources
Archdale Parks & Recreation
Asheboro Parks & Recreation
Burlington Recreation & Parks
Carrboro Recreation & Parks
Cary Parks, Recreation & Cultural Resources
Clayton Parks & Recreation
Durham Parks & Recreation
Eden Parks & Recreation
Franklin County Parks, Recreation & Cultural Resources
Garner Parks & Recreation
Gibsonville Parks & Recreation
Graham Recreation & Parks
Greensboro Parks & Recreation
Haw River Recreation
Henderson-Vance Recreation & Parks
High Point Parks & Recreation

Hoke County Parks & Recreation
Hope Mills Parks & Recreation
Knightdale Parks & Recreation
Lee County Parks & Recreation
Liberty Recreation
Madison-Mayodan Recreation
Mebane Recreation & Parks
Morrisville Parks, Recreation & Cultural Resources
Orange County Recreation & Parks
Person County Parks & Recreation
Pinehurst Parks & Recreation
Raleigh Parks & Recreation
Reidsville Recreation
Rolesville Parks & Recreation
Selma Parks & Recreation
Wake Forest Parks & Recreation
Zebulon Parks & Recreation

Southeast

Ayden Recreation & Parks
Brunswick County Parks & Recreation
Carolina Beach Recreation & Parks
Carteret County Parks & Recreation
Clinton Recreation & Parks
Goldsboro Parks & Recreation
Havelock Recreation
Jacksonville Recreation & Parks
Lumberton Recreation & Parks

Mount Olive Parks & Recreation
New Hanover County Parks
Onslow County Parks & Recreation
Robeson County Parks & Recreation
Sampson County Parks & Recreation
Scotland County Parks & Recreation
Whiteville Parks & Recreation
Wrightsville Beach Parks & Recreation

Western

Asheville Parks & Recreation
Avery County Parks & Recreation
Black Mountain Recreation & Parks
Burke County Recreation & Parks
Canton Recreation & Parks
Haywood County Recreation

Highlands Parks & Recreation
McDowell County Parks & Recreation
Mitchell County Parks & Recreation
Shelby Parks & Recreation
Transylvania County Parks & Recreation
Waynesville Parks & Recreation

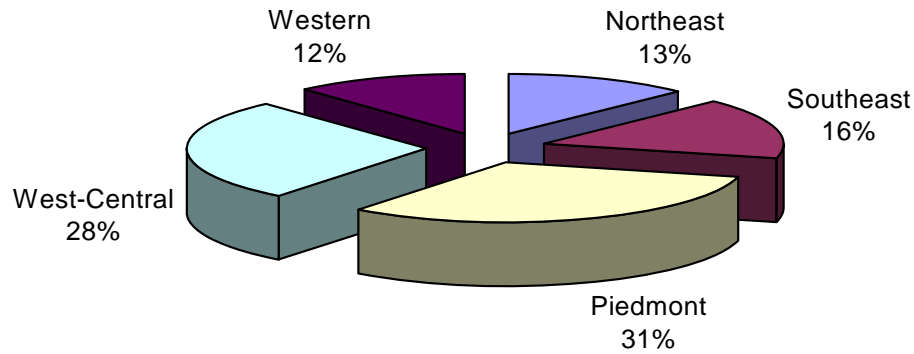
West-Central

Blowing Rock Parks & Recreation
 Cabarrus County Parks & Recreation
 Catawba County Parks Division
 Cramerton Parks & Recreation
 Davidson Parks & Recreation
 Elkin Recreation & Parks
 Gaston County Parks & Recreation
 Gastonia Parks & Recreation
 Hickory Parks & Recreation
 Huntersville Parks & Recreation
 Iredell County Recreation
 Kannapolis Parks & Recreation
 Kernersville Parks & Recreation
 Lexington Parks & Recreation
 Matthews Parks & Recreation

Mecklenburg County Park & Recreation
 Mocksville-Davie Parks & Recreation
 Mooresville Recreation
 Mount Airy Parks and Recreation
 Newton Parks & Recreation
 Rowan County Parks & Recreation
 Salisbury Parks & Recreation
 Statesville Recreation & Parks
 Surry County Recreation
 Thomasville Parks & Recreation
 Union County Parks & Recreation
 Watauga County Parks & Recreation
 Wilkes County Parks & Recreation
 Winston-Salem Recreation & Parks

Park and recreation agencies servicing large urban population areas may skew results of means (averages) calculated for the region. To alleviate this problem, median results will also be displayed. Medians are statistically robust and reflect the midpoint of the reported results. For more information on the properties of median values, see Appendix C.

Figure 2. M CPRSS Respondents by Geographic Region



Description of Population Categories

The population estimates used in this report were certified county and municipal estimates of July 2005 population. The estimates were calculated by the State Demographer, Office of State Budget and Management, North Carolina Office of the Governor and provided online at <http://demog.state.nc.us>. The population category groupings include:

- A Departments serving populations greater than 100,000
- B Departments serving populations between 99,999 and 50,000
- C Departments serving populations between 49,999 and 25,000
- D Departments serving populations between 24,999 and 10,000
- E Departments serving populations between 9,999 and 5,000
- F Departments serving populations less than 4,999

Agencies by Population Class:

Class A

Agency	Population Estimate
Cabarrus County Parks & Recreation	150,434
Cary Parks, Recreation & Cultural Resources	115,967
Catawba County Parks Division	149,032
Durham Parks & Recreation	242,210
Gaston County Parks & Recreation	193,886
Greensboro Parks & Recreation	237,316
Iredell County Recreation	139,727
Mecklenburg County Park & Recreation	796,232
New Hanover County Parks	180,358
Onslow County Parks & Recreation	157,748
Orange County Recreation & Parks	121,991
Pitt County Community Schools & Recreation	143,207
Raleigh Parks & Recreation	338,357
Robeson County Parks & Recreation	127,695
Rowan County Parks & Recreation	133,339
Union County Parks & Recreation	161,332
Winston-Salem Recreation & Parks	198,593

Class B

Agency	Population Estimate
Asheville Parks & Recreation	73,189
Brunswick County Parks & Recreation	89,463
Burke County Recreation & Parks	88,293
Carteret County Parks & Recreation	62,760
Franklin County Parks, Recreation & Cultural Resources	54,106
Gastonia Parks & Recreation	70,243
Greenville Recreation & Parks	68,852
Haywood County Recreation	56,595
High Point Parks & Recreation	92,491
Jacksonville Recreation & Parks	73,121
Lee County Parks & Recreation	53,789
Rocky Mount Parks & Recreation	56,291
Sampson County Parks & Recreation	63,566
Surry County Recreation	73,028
Wilkes County Parks & Recreation	66,897

Class C

Agency	Population Estimate
Apex Parks, Recreation & Cultural Resources	27,203
Burlington Recreation & Parks	47,295
Goldsboro Parks & Recreation	38,186
Henderson-Vance Recreation & Parks	43,624
Hickory Parks & Recreation	38,018
Huntersville Parks & Recreation	31,646
Kannapolis Parks & Recreation	40,139
Matthews Parks & Recreation	25,442
McDowell County Parks & Recreation	43,175
Mocksville-Davie Parks & Recreation	38,930
Pasquotank County Parks & Recreation	38,882
Person County Parks & Recreation	37,125
Salisbury Parks & Recreation	29,058
Scotland County Parks & Recreation	36,838
Thomasville Parks & Recreation	26,084
Transylvania County Parks & Recreation	29,880
Watauga County Parks & Recreation	42,934

Class D

Agency	Population Estimate
Asheboro Parks & Recreation	23,213
Avery County Parks & Recreation	18,030
Bertie County Parks & Recreation	19,640
Carrboro Recreation & Parks	17,797
Clayton Parks & Recreation	11,584
Currituck County Parks & Recreation	22,984
Eden Parks & Recreation	15,773
Edenton-Chowan Parks & Recreation	14,470
Elizabeth City Parks & Recreation	18,871
Garner Parks & Recreation	22,406
Graham Recreation & Parks	14,025
Havelock Recreation	22,455
Hope Mills Parks & Recreation	12,422
Kernersville Parks & Recreation	21,277
Lexington Parks & Recreation	20,918
Lumberton Recreation & Parks	22,619
Mitchell County Parks & Recreation	15,880
Mooresville Recreation	23,125
Morrisville Parks, Recreation & Cultural Resources	12,829
Newton Parks & Recreation	13,075
Pinehurst Parks & Recreation	11,026
Reidsville Recreation	14,621

Agency	Population Estimate
Roanoke Rapids Parks & Recreation	16,721
Shelby Parks & Recreation	20,876
Statesville Recreation & Parks	25,344
Wake Forest Parks & Recreation	19,792
Warren County Parks & Recreation	20,215

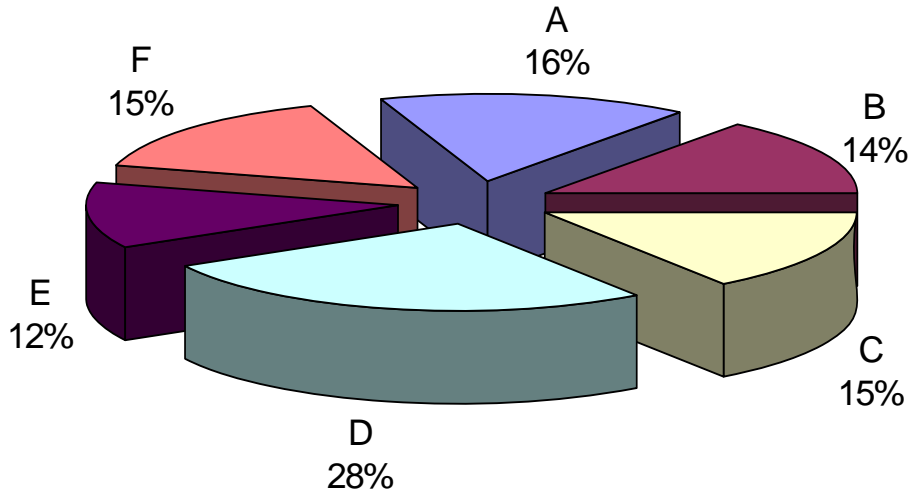
Class E

Agency	Population Estimate
Archdale Parks & Recreation	9,472
Black Mountain Recreation & Parks	7,694
Carolina Beach Recreation & Parks	5,640
Clinton Recreation & Parks	8,694
Davidson Parks & Recreation	8,162
Knightdale Parks & Recreation	6,938
Mebane Recreation & Parks	8,100
Mount Airy Parks and Recreation	8,579
Selma Parks & Recreation	6,841
Washington Parks, Recreation & Civic Center	9,836
Waynesville Parks & Recreation	9,531
Whiteville Parks & Recreation	5,102
Williamston Parks & Recreation	5,801

Class F

Agency	Population Estimate
Ayden Recreation & Parks	4,782
Blowing Rock Parks & Recreation	1,427
Canton Recreation & Parks	4,123
Cramerton Parks & Recreation	3,150
Elkin Recreation & Parks	4,175
Farmville Parks	4,611
Gibsonville Parks & Recreation	4,619
Haw River Recreation	1,985
Highlands Parks & Recreation	954
Liberty Recreation	2,779
Madison-Mayodan Recreation	4,664
Mount Olive Parks & Recreation	4,610
Rolesville Parks & Recreation	1,742
Rutherfordton Parks and Recreation	4,151
Wrightsville Beach Parks & Recreation	2,648
Zebulon Parks & Recreation	4,606

Figure 3. MCPRSS Respondents by Population Class



Limitations

Local government park and recreation agencies provide diverse functions. Some agencies focus on delivering park facilities as well as active recreation programming. Others may focus on providing only parks or, possibly, even civic centers and golf courses. For the purpose of this report, distinction will only be made on agencies funded by local tax-supported revenues of municipalities, counties and municipal/county combinations.

The information provided by the departments responding to the survey was entered and analyzed exactly as reported. In some instances, the information provided on one question may directly contradict information provided for another question. RRS assumes each local park and recreation agency reports their information completely and accurately.

Some departments did not complete all sections of the survey. The means and medians displayed in the report are based upon the responses of those departments that did respond. Therefore, some tables may have missing values. These missing values should not be interpreted as having a value of zero.

The response rate for the 2006-07 MCPRSS impacts the validity of the information provided in this report. Care must be taken when making interpretations from the reported data. The information only represents a sample (105) of the total local government parks and recreation departments (219). When interpreting means and medians of a certain population category or geographic region, consider how well the sample represents the total population for those characteristics. For assistance see Tables 1, 2 and 3.

Data collected from the combination departments and commission were excluded from tables 9, 10, and 12. There was not enough raw data to provide fields in the tables when they were subdivided into classes.

Table 1
2006-07 MCPRSS Sample Representation by Population Category

Population Class	Total Departments (N = 219)	Total Responding to 06-07 MCPRSS (n = 105)	Representative Percentage
A	22	17	77.27%
B	22	14	63.64%
C	29	18	62.07%
D	51	27	52.94%
E	35	13	37.14%
F	60	16	26.67%

Table 2
2006-07 MCPRSS Sample Representation by Geographic Region

Geographic Region	Total Departments (N = 219)	Total Responding to 06-07 MCPRSS (n = 105)	Representative Percentage
Northeast	27	13	48.15%
Piedmont	61	33	54.10%
Southeast	40	17	42.50%
West-Central	54	29	53.70%
Western	37	13	35.14%

Table 3
2006-07 MCPRSS Sample Population Category by Geographic Region

Region	Class A	Class B	Class C	Class D	Class E	Class F
Northeast	1	2	1	6	2	1
Piedmont	5	2	5	11	4	6
Southeast	3	4	2	2	3	3
West-Central	8	3	8	5	2	3
Western		3	2	3	2	3

Mean and median results from the Municipal and County Services Study, Fiscal Year 2006-07 provide significant information to local government park and recreation agencies if interpreted correctly. If the mean and median values are very close, the sample has a normal frequency distribution and the mean offers a good measure of the midpoint. If significant difference exists between the mean and median, lean towards using the median as the measure of central tendency. This sample possesses a nonsymmetrical distribution and suffers skewness. When the mean is significantly higher than the median, abnormally high values skew the sample. When the median is significantly larger than the mean, abnormally low values skew the sample.

Expenditure Information - Major Changes - 2006-2007

The information presented in this executive summary only reflects a census of all public parks and recreation departments' expenditures as audited by the North Carolina Department of State Treasurer. The Local Government Commission and Department of State Treasurer provided standardized financial reports from the fiscal year 2004-2005. The data is aged one year but is standardized to create uniform comparables. When reviewing the data, consider that it does not provide the complete picture, but rather a generalization. There are two data sets involved in this section. There will be the parks and recreation department area and the statewide spending area. The statewide spending area will include financial allocations from communities without parks and recreation departments. All operating expenses are under Salaries and Other Direct Spending. All capital expenses are under Construction and Land, Equipment, and Existing Structures.

Table 4
Total Reported 2004-2005 Expenditures for All Local Government Parks and Recreation Departments in North Carolina

Department Type	Number Responding	Operating Expenditures	Capital Expenditures	TOTAL Expenditures
Combination	n = 7	\$14,366,951	\$3,726,681	\$18,093,632
County	n = 73	\$77,916,595	\$30,659,656	\$108,576,251
Municipal	n = 139	\$207,362,127	\$61,505,872	\$268,867,999
TOTAL	N = 219	\$299,645,673	\$95,892,209	\$395,537,882

Table 5
Total Reported 2004-2005 Expenditures for the Entire State of North Carolina

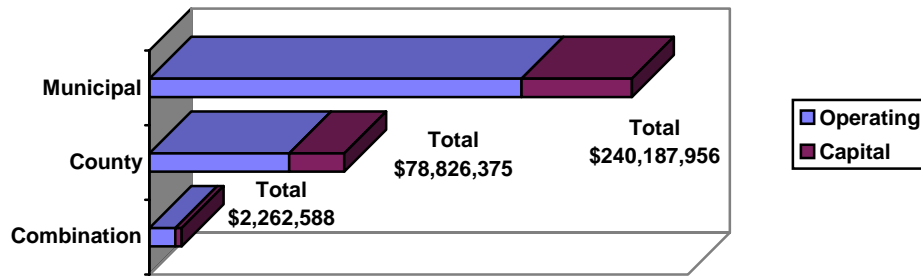
Department Type	Number Responding	Operating Expenditures	Capital Expenditures	TOTAL Expenditures
County	n = 100	\$86,153,730	\$33,209,045	\$119,362,775
Municipal	n = 548	\$228,422,438	\$71,947,969	\$300,370,407
TOTAL	N = 648	\$314,576,168	\$105,157,014	\$419,733,182

**The 2004-2005 Total Reported Local Government Expenditures
for the Entire State of North Carolina:**

\$419,733,182

Figure 4.

**2004-2005 Reported Expenditures for All Local Government
Park and Recreation Departments in North Carolina**



**Table 6
Parks and Recreation 2004-2005 Audited Operating and Capital Expenditures by
Department Type**

Department Type	Salaries	All Other Direct Spending	Construction	Land, Equipment and Existing Structures
Combination				
Mean	\$970,990	\$1,081,431	\$852,634	\$52,691
Median	\$468,520	\$317,003	\$152,467	\$31,540
County				
Mean	\$599,456	\$506,404	\$909,378	\$109,044
Median	\$176,203	\$184,204	\$317,840	\$29,280
Municipal				
Mean	\$845,350	\$775,754	\$927,891	\$206,787
Median	\$302,378	\$255,176	\$349,397	\$59,441

* Operating Expenses = Salaries and All Other Direct Spending
 ** Capital Expenses = Construction and Land, Equipment, and Existing Structures
 *** For more information on the statistical properties of median values, consult Appendix D.

**Table 7
Parks and Recreation 2004-2005 Audited Operating and Capital Expenditures by Region**

Geographic Region	Salaries	All Other Direct Spending	Construction	Land, Equipment and Existing Structures
Northeast (n=27)				
Mean	\$505,578	\$405,420	\$1,564,465	\$181,313
Median	\$136,795	\$109,179	\$609,626	\$72,748
Piedmont (n=60)				
Mean	\$1,118,884	\$989,759	\$945,429	\$200,062
Median	\$275,158	\$280,347	\$203,851	\$47,000
Southeast (n=40)				
Mean	\$475,090	\$411,369	\$702,826	\$86,411
Median	\$270,951	\$170,043	\$515,851	\$26,308
WestCent (n=56)				
Mean	\$912,283	\$906,683	\$985,492	\$184,798
Median	\$313,492	\$357,069	\$265,082	\$53,336
Western (n=36)				
Mean	\$427,536	\$398,537	\$375,854	\$153,744
Median	\$136,462	\$181,729	\$175,290	\$21,573

* Operating Expenses = Salaries and All Other Direct Spending
 ** Capital Expenses = Construction and Land, Equipment, and Existing Structures
 *** For more information on the statistical properties of median values, consult Appendix D.

Table 8
Reported Mean and Median Audited 2004-2005 Operating and Capital Expenditures by Agency Type/Population Categories

	Class	Salaries	All Other Direct Spending	Construction	Land, Equipment and Existing Structures
County	A	\$2,147,077	\$1,454,833	\$2,364,066	\$251,363
	<i>Median</i>	\$549,131	\$441,296	\$813,973	\$59,040
	B	\$385,810	\$416,519	\$223,528	\$133,751
	<i>Median</i>	\$310,029	\$369,915	\$156,696	\$60,388
	C	\$258,846	\$219,691	\$371,444	\$28,746
	<i>Median</i>	\$203,870	\$184,204	\$515,851	\$22,331
	D	\$85,236	\$118,634	\$892,604	\$33,338
	<i>Median</i>	\$71,006	\$94,726	\$892,604	\$14,715
Municipal	A	\$8,083,728	\$7,418,247	\$2,945,355	\$415,881
	<i>Median</i>	\$6,224,399	\$5,219,866	\$2,730,825	\$104,642
	B	\$2,402,873	\$1,730,717	\$2,414,590	\$414,102
	<i>Median</i>	\$2,513,185	\$1,804,162	\$552,915	\$90,820
	C	\$1,124,047	\$1,150,172	-	\$521,115
	<i>Median</i>	\$870,947	\$905,743	-	\$274,005
	D	\$608,889	\$497,898	\$531,946	\$252,084
	<i>Median</i>	\$492,454	\$452,739	\$135,745	\$108,085
	E	\$350,447	\$421,617	\$328,390	\$72,909
	<i>Median</i>	\$286,797	\$437,969	\$269,123	\$40,826
F	\$169,332	\$124,306	-	\$27,459	
<i>Median</i>	\$141,348	\$121,426	-	\$12,500	

* Dash represents less than

three responses

** Commission and Combination departments were excluded because of small sample sizes

*** For more information on the statistical properties of median values, consult Appendix D.

Per Capita Expenditures - Major Changes - 2006-2007

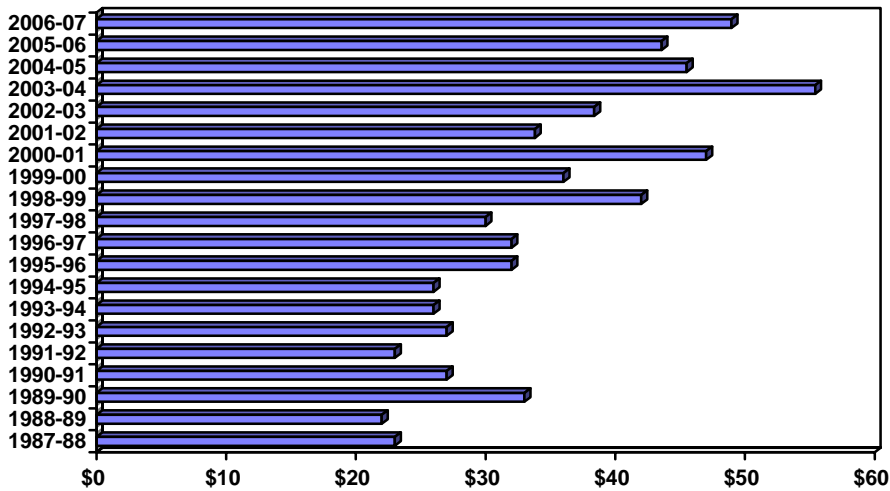
Per capita expenditure provides a method of budget comparison between like agencies. To obtain the measure of per capita expenditure, the total projected 2006-2007 parks and recreation budget was divided by the total population of the local government jurisdiction. The 2005 data from the State Demographer, Office of State Budget and Management, North Carolina Office of the Governor provides the population statistics utilized for the derivation of the 2006-2007 measure of per capita expenditure. Some communities have experienced rapid growth during the past five years while other communities suffered through population loss.

All local park and recreation agencies **should** derive their per capita measures based upon the most current local population estimates.

Since fiscal year 1986-87, the local government per capita expenditure for parks and recreation taken from the reported sample has ranged between \$22.00 and \$55.41. For fiscal year 2006-2007, the 105 reporting agencies show a projected per capita expenditure of \$48.96. This figure was derived from the total parks and recreation budget of all reporting agencies divided by the total population of all reporting agencies (remember this represents a **sample** of 47.95% of all local government park and recreation agencies). An analysis of individual agency per capita expenditure for parks and recreation revealed a mean of \$77.23 with a median of \$59.61. These figures were derived from the individual park and recreation budget of each reporting agency divided by the individual population estimate of each reporting agency.

Figure 5.

Historic Projected Per Capita Expenditures Reported from the Sample for Local Government Parks and Recreation in North Carolina



- ◆ **Projected per capita expenditure based on all reporting agencies was higher in 2006-07 than in 2005-06, \$48.96 vs. \$43.57.**
- ◆ **Mean per capita expenditure based on individual reporting agency was higher in 2006-07 than in 2005-06, \$77.23 vs. \$72.08.**
- ◆ **Median per capita expenditure based on individual reporting agency was higher in 2006-07 than in 2005-06, \$59.61 vs. \$50.00.**

* For more information on the statistical properties of median values, consult Appendix D.

Table 9
Reported Mean and Median Projected Per Capita Expenditures by Geographic Region

Geographic Region	FY 06-07		FY 05-06		FY 04-05	
	Mean	Median	Mean	Median	Mean	Median
Northeast	\$61.81	\$62.11	\$69.02	\$54.32	\$135.23	\$61.45
Piedmont	\$83.08	\$77.31	\$75.49	\$71.80	\$71.88	\$63.18
Southeast	\$53.23	\$41.02	\$37.68	\$25.97	\$45.90	\$43.57
West-Central	\$67.36	\$38.25	\$59.43	\$36.58	\$62.80	\$45.92
Western	\$132.20	\$50.30	\$151.39	\$80.80	\$101.85	\$14.84

* For more information on the statistical properties of median values, consult Appendix D.

In reviewing the information in this study, keep in mind that the MCPRSS results for Fiscal Year 2006-07 represent a difference in reporting agencies as well as an increase in response rate of 10.45% from last year's study. The West Central and Piedmont Regions had the highest response rate while Western and Northeast had the lowest.

The means and medians by population category were formulated by taking the average of each agency's per capita expenditure in that given category. An example follows:

Example

Agency	Total Budget	Population	Total Per Capita
Asheville Parks & Recreation	\$6,067,126	68,889	\$88.07
Concord Parks & Recreation	\$4,640,055	55,977	\$82.89
Greenville Recreation & Parks	\$4,797,151	60,476	\$79.32
Jacksonville Recreation & Parks	\$2,031,938	66,715	\$30.46
Rocky Mount Parks & Recreation	\$6,263,222	55,893	\$112.06
Mean, Municipal Class B			\$78.56
Median, Municipal Class B			\$82.89

Municipal Class B Mean = $(\$88.07 + \$82.89 + \$79.32 + \$30.46 + \$112.06) \div 5$ agencies.
 Municipal Class B Median = the number which falls in the middle of \$30.46 (the lowest per capita) and \$112.06 (the highest per capita) when ordered numerically.

Acreage and Park Inventory

This section of the 2006-07 MCPRSS is an inventory of the reported park and recreation acreage owned within each governmental jurisdiction. Remember: This data is presented as reported on returned survey forms, accuracy of the data is the responsibility of the reporting agency, and blank values do not necessarily represent a value of zero.

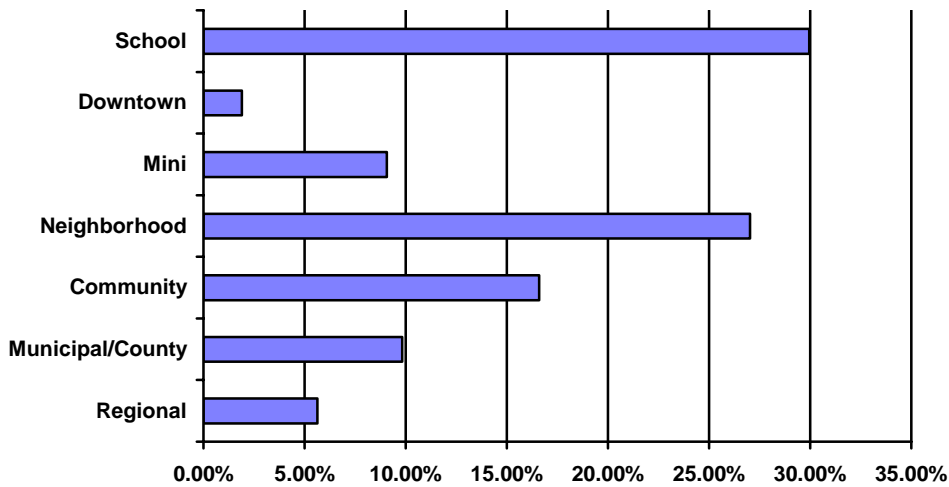
Table 10
Reported Acres of Owned Park and Recreation Lands

Agency	Developed P&R Land	Undeveloped P&R Land
Apex Parks, Recreation & Cultural Resources	213	167
Archdale Parks & Recreation	76	24
Asheboro Parks & Recreation	1,663	375
Asheville Parks & Recreation	913	15
Avery County Parks & Recreation	12	51
Ayden Recreation & Parks	10	
Bertie County Parks & Recreation	6	33
Black Mountain Recreation & Parks	40	3
Blowing Rock Parks & Recreation	44	
Brunswick County Parks & Recreation	242	1,128
Burke County Recreation & Parks	97	61
Burlington Recreation & Parks	581	50
Cabarrus County Parks & Recreation	439	55
Canton Recreation & Parks	11	12
Carolina Beach Recreation & Parks	15	
Carrboro Recreation & Parks	72	37
Carteret County Parks & Recreation	164	
Cary Parks, Recreation & Cultural Resources	651	1,150
Catawba County Parks Division	650	
Clayton Parks & Recreation	53	44
Clinton Recreation & Parks	90	5
Currituck County Parks & Recreation	105	85
Davidson Parks & Recreation	134	172
Durham Parks & Recreation	1,277	583
Eden Parks & Recreation	90	
Edenton-Chowan Parks & Recreation	50	450
Elizabeth City Parks & Recreation	79	
Elkin Recreation & Parks	52	17
Garner Parks & Recreation	184	243
Gaston County Parks & Recreation	513	275
Gastonia Parks & Recreation	347	282
Gibsonville Parks & Recreation	18	18
Goldsboro Parks & Recreation	275	162
Graham Recreation & Parks	750	25
Greensboro Parks & Recreation	4,001	248
Greenville Recreation & Parks	793	265
Havelock Recreation	85	15
Haw River Recreation	25	

Agency	Developed P&R Land	Undeveloped P&R Land
Henderson-Vance Recreation & Parks	72	99
Hickory Parks & Recreation	444	53
High Point Parks & Recreation	2,825	50
Highlands Parks & Recreation	18	23
Hoke County Parks & Recreation	10	100
Hope Mills Parks & Recreation	200	110
Huntersville Parks & Recreation	10	19
Iredell County Recreation	42	57
Kannapolis Parks & Recreation	91	70
Kernersville Parks & Recreation	266	62
Knightdale Parks & Recreation	27	168
Lee County Parks & Recreation	314	18
Lexington Parks & Recreation	237	100
Liberty Recreation	24	4
Madison-Mayodan Recreation	310	
Matthews Parks & Recreation	39	86
McDowell County Parks & Recreation	84	60
Mebane Recreation & Parks	82	160
Mecklenburg County Park & Recreation	7,500	9,980
Mitchell County Parks & Recreation	2	
Mocksville-Davie Parks & Recreation	83	
Mooresville Recreation	122	75
Morrisville Parks, Recreation & Cultural Resources	47	81
Mount Airy Parks and Recreation	110	10
Mount Olive Parks & Recreation	6	
New Hanover County Parks	534	150
Newton Parks & Recreation	25	75
Orange County Recreation & Parks	506	743
Pasquotank County Parks & Recreation	139	30
Person County Parks & Recreation	185	
Pinehurst Parks & Recreation	230	67
Pitt County Community Schools & Recreation	8	94
Raleigh Parks & Recreation	4,868	3,701
Reidsville Recreation	600	100
Roanoke Rapids Parks & Recreation	175	
Robeson County Parks & Recreation	195	
Rocky Mount Parks & Recreation	485	21
Rolesville Parks & Recreation	17	30
Rowan County Parks & Recreation	287	525
Sampson County Parks & Recreation		6
Scotland County Parks & Recreation	100	15
Selma Parks & Recreation	24	1
Shelby Parks & Recreation	230	
Statesville Recreation & Parks	272	192
Surry County Recreation	111	
Thomasville Parks & Recreation	91	

Agency	Developed P&R Land	Undeveloped P&R Land
Rutherfordton Parks and Recreation	30	
Union County Parks & Recreation	600	695
Wake Forest Parks & Recreation	106	480
Warren County Parks & Recreation	31	
Washington Parks, Recreation & Civic Center	116	264
Watauga County Parks & Recreation	20	80
Waynesville Parks & Recreation	59	
Whiteville Parks & Recreation	37	6
Williamston Parks & Recreation	52	15
Winston-Salem Recreation & Parks	1,424	2,043
Wrightsville Beach Parks & Recreation	18	62
Zebulon Parks & Recreation	63	2

Figure 6. Types of Parks Reported by Percentage



* Percentages based upon reported numbers from 2006-07 survey respondents

DEFINITIONS:

- a. Regional Park = servicing several communities or a multi-county region
- b. Municipal/County Park = servicing one municipality or one county
- c. Community Park = servicing an identifiable group of neighborhoods equating to a community area
- d. Neighborhood Park = servicing several small clusters of residential areas
- e. Mini-Park = servicing a limited number of streets in a neighborhood
- f. Passive Downtown Mall Park = servicing a downtown mall area
- g. School Park = a park located on school property in joint use by a school and a parks and recreation department

**Table 11
Park Type, Maintenance Staff and All Departments**

Park Area	Number Owned	Total Acreage	Average Number of Maintenance Staff Per Park
Community Parks	306	7,949	4.08
Mini-Parks	167	273	2.27
Municipal/County Parks	181	10,072	2.78
Neighborhood Parks	498	4,643	2.44
Passive Downtown Mall Parks	35	77	1.99
Regional Parks	104	13,293	3.37

**Table 12
Park Type, Maintenance Staff and Size A Departments**

Park Area	Number Owned	Total Acreage	Average Number of Maintenance Staff Per Park
Community Parks	127	4,644	12.88
Mini-Parks	66	130	4.20
Municipal/County Parks	41	5,385	3.80
Neighborhood Parks	286	3,244	3.58
Passive Downtown Mall Parks	7	20	7.50
Regional Parks	53	8,483	4.15

**Table 13
Park Type, Maintenance Staff and Size B Departments**

Park Area	Number Owned	Total Acreage	Average Number of Maintenance Staff Per Park
Community Parks	63	1,132	1.88
Mini-Parks	47	85	0.92
Municipal/County Parks	29	1,538	2.75
Neighborhood Parks	54	378	0.85
Passive Downtown Mall Parks	6	28	1.13
Regional Parks	22	3,220	1.91

Table 14
Park Type, Maintenance Staff and Size C Departments

Park Area	Number Owned	Total Acreage	Average Number of Maintenance Staff Per Park
Community Parks	43	645	2.70
Mini-Parks	11	20	0.65
Municipal/County Parks	26	641	2.67
Neighborhood Parks	65	230	3.80
Passive Downtown Mall Parks	8	10	0.87
Regional Parks	15	765	6.25

Table 15
Park Type, Maintenance Staff and Size D Departments

Park Area	Number Owned	Total Acreage	Average Number of Maintenance Staff Per Park
Community Parks	51	1,022	3.10
Mini-Parks	23	22	2.60
Municipal/County Parks	35	1,732	2.96
Neighborhood Parks	69	656	4.02
Passive Downtown Mall Parks	7	14	1.00
Regional Parks	9	696	2.42

Table 16
Park Type, Maintenance Staff and Size E Departments

Park Area	Number Owned	Total Acreage	Average Number of Maintenance Staff Per Park
Community Parks	16	419	2.04
Mini-Parks	6	4	1.50
Municipal/County Parks	28	262	1.43
Neighborhood Parks	16	42	0.85
Passive Downtown Mall Parks	5	3	1.00
Regional Parks	4	94	2.00

Table 17
Park Type, Maintenance Staff and Size F Departments

Park Area	Number Owned	Total Acreage	Average Number of Maintenance Staff Per Park
Community Parks	6	88	2.00
Mini-Parks	14	12	3.00
Municipal/County Parks	22	515	3.14
Neighborhood Parks	8	93	1.00
Passive Downtown Mall Parks	2	2	1.00
Regional Parks	1	35	3.00

Maintenance Staff

105 Departments returned their questionnaire.

Total number of **Full-Time** maintenance workers: 1,129

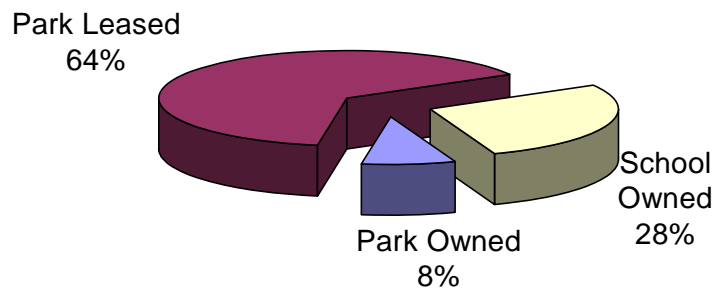
Total number of **Part-Time** maintenance workers: 397

School Parks:

This year's survey asked respondents to further classify school parks. School parks were listed in one of the following categories:

- Owned by Park Department
- Owned by School
- Owned by School, Leased to Park Department

Figure 7. Types of Agreements for School Parks



Recreation Inventory

The Recreation Inventory section of the MCPRSS is intended to provide an overview of the number and type of facilities that park and recreation agencies are providing for the people of North Carolina. This data is based on responses from 105 (47.95%) of North Carolina's 219 recognized park and recreation agencies. Columns titled "Total Number Reported" refer to the grand total number of that item reported across the state.

Table 18
Indoor Facilities

	Total Number Reported	Average Square Foot (ASF) or Distance in Feet (DIST-FT)
Aerobic Studios	19	571 ASF
Equestrian Centers	2	14,400 ASF
Indoor Climbing Wall	10	
In-Line Hockey Rinks	2	5,125 ASF
Recreation/Community Centers with Gymnasiums	156	6,165 ASF
Recreation/Community Centers without Gymnasiums	85	2,259 ASF
Senior Citizens Centers	43	5,539 ASF
Walking, Jogging or Running Tracks	24	1,359 DIST-FT
Weight Rooms	72	573 ASF

Table 19
Outdoor Facilities

	Total Number Reported	Average Square Foot (ASF) or Distance in Feet (DIST-FT)
Climbing Wall	5	
Concession Stands	309	117 ASF
Disc/Frisbee Golf Courses	32	7 Acres
Dog Parks	19	
Equestrian Areas	10	
Ice Skating Rinks	3	
In-Line Skating Area	6	10,803 ASF
Picnic Shelters	966	966 ASF
Playgrounds/Totlots	904	757 ASF
Ropes Courses	4	
Skateboard Parks	20	6,488 ASF
Walking, Jogging or Running Tracks	179	3,044 AVG LF

Table 20
Cultural Facilities

	Total Number Reported	Average Square Foot (ASF) or Seating Capacity (SC).
Amphitheaters	39	
Arts Centers	14	8,900 ASF
Auditoriums	19	
Historic or Cultural Centers (indoor)	20	2,114 ASF
Historic or Cultural Areas (outdoor)	8	
Libraries	37	
Museums	14	6,235 ASF
Stage Areas	38	
Zoological Areas	3	

Table 21
Single-Use Fields & Courts

	Total Number Reported	Total Number Not Owned But Being Used through an Agreement	Total Lighted Reported
Baseball Fields	511	235	406
Basketball Courts (indoor)	200	125	
Basketball Courts (outdoor)	532	70	89
Bocci	47	3	2
Football Fields	49	95	57
Handball/Racquetball Courts (indoor)	17		
Handball (outdoor)	3		
Horseshoe Courts	366	41	109
Sand Volleyball Courts	183	1	17
Shuffleboard Courts (indoor)	31	4	
Shuffleboard Courts (outdoor)	57	8	2
Soccer Fields (indoor)	9	1	
Soccer Fields (outdoor)	412	146	148
Softball Fields	340	100	259
Tennis Courts (indoor)	29		
Tennis Courts (outdoor)	1,029	325	759

* 22.93% of all recreation facilities being used are through agreements.

** There are 1,390 total facilities utilized with agreements.

**Table 22
Multi-Use Fields & Courts**

	Total Number Reported	Total Number Not Owned But Being Used through an Agreement	Total Lighted Reported
Multi-Purpose Fields (e.g., baseball/softball/football/soccer)	440	178	238
Indoor Multi-Use Recreation Courts (e.g., basketball/volleyball/tennis/soccer)	224	51	
Outdoor Multi-Use Recreation Courts (e.g., basketball/volleyball/tennis)	194	7	6

* 22.93% of all recreation facilities being used are through agreements.

** There are 1,390 total facilities utilized with agreements.

**Table 23
Golf Course Facilities**

	Total Number Reported
Golf Driving Ranges	21
Miniature Golf Courses	8
Par 3 9-Hole Courses	4
9-Hole Executive Courses	4
18-Hole Courses	14
18-Hole Championship Courses	7

**Table 24
Swimming Pools**

	Total Number Reported	Average Gallons/Pool	Total Agencies Reporting Facility
Spraygrounds	20	1,250	7
Swimming Pools (indoor)	20	216,400	15
Swimming Pools (outdoor)	77	114,661	42
Therapy Pools	4	56,633	4
Wading/Kids Pools	29	6,574	20
Waterslides	5		4
Wave Pools			

**Table 25
Natural Swimming Areas**

	Total Number Reported	Total Agencies Reporting Facility
Beaches	13	6
Flowing Bodies of Water (i.e., creeks & rivers)	159	27
Standing Bodies of Water (i.e., ponds & lakes)		
0 - 5 Acres	374	27
6 - 10 Acres	19	11
11-15 Acres	6	2
16-20 Acres	5	3
Greater than 20 Acres	53	22
Wetlands	29	17

**Table 26
Outdoor Aquatic Support Facilities**

	Total Number Reported	Total Agencies Reporting Facility
Beach Access Facilities	83	6
Boat Launching Facilities	50	27
Canoe Access	88	37
Covered Boat Slips	20	1
Dry Storage Units	86	3
Fishing Piers	71	33
Mooring Buoys		
Open Boat Slips	166	8

**Table 27
Overnight Accommodation Facilities**

	Total Number Reported	Total Agencies Reporting Facility
Cabins	26	6
Group Campsites	144	12
Primitive/Backcountry Campsites (i.e., no bath house, picnic table, fire ring)	42	9
RV/Trailer Campsites with Hookups (i.e., water, sewer, electric)	291	9
RV/Trailer Campsites with No Hookups	32	1
Tent Campsites with Tentpad and Hookups (i.e., water, sewer, electric)	61	5
Tent Campsites with Tentpad and No Hookups	48	5

TRAIL-RELATED DEFINITIONS:

Trail = A pathway designed and constructed to carry other than normal vehicular traffic

Multi-Use Trail = Trail designed for use by more than one user group

Greenways = Linear parks interconnected to form a City/Countywide network of natural open space

ADA Compliant Surfacing = Conforms to US Access Board's slip-resistant, stable, and firm standards

Noncompliant Surfacing = Any surface that does not conform to ADA standards

Natural Surface = Bare earth or mulch surface

Hardened Surface = Crusher run base (or similar) with rock dust (or similar) surface

Developed = Currently available for use

Undeveloped = Acquired space but not currently available for public use

**Table 28
Single-Use Trails (Pedestrian Recreation)**

Agency	Miles Developed	Miles Undeveloped	ADA Surface	Non-ADA Compliant
Avery County Parks & Recreation	0.95		0.95	
Black Mountain Recreation & Parks	1.00			1.00
Blowing Rock Parks & Recreation	1.00		1.00	
Burke County Recreation & Parks	4.00			4.00
Burlington Recreation & Parks	1.75			1.75
Cabarrus County Parks & Recreation	3.00		3.00	
Canton Recreation & Parks	2.00		1.40	0.60
Carrboro Recreation & Parks	1.75		0.50	1.25
Cary Parks, Recreation & Cultural Resources	8.40		0.80	7.60
Catawba County Parks Division	19.00		2.10	16.90
Clayton Parks & Recreation	0.50		0.50	
Clinton Recreation & Parks	1.00			0.75
Cramerton Parks & Recreation	1.50		1.50	
Currituck County Parks & Recreation	3.40		3.40	
Davidson Parks & Recreation	2.50			2.50
Durham Parks & Recreation	17.00		14.00	3.00
Edenton-Chowan Parks & Recreation		2.00		
Elizabeth City Parks & Recreation	0.75		0.50	0.25
Elkin Recreation & Parks	2.00	2.90	1.00	1.00
Gaston County Parks & Recreation	4.25		3.00	1.25
Graham Recreation & Parks	2.00		2.00	
Greensboro Parks & Recreation	28.00	81.00		
Greenville Recreation & Parks	2.60		1.30	1.30
Havelock Recreation		9.00		
Haw River Recreation	1.00			1.00
Haywood County Recreation	0.50		0.50	
Henderson-Vance Recreation & Parks	0.75	0.75	0.75	

Agency	Miles Developed	Miles Undeveloped	ADA Surface	Non-ADA Compliant
Hickory Parks & Recreation	1.75			
Highlands Parks & Recreation	10.00		4.00	6.00
Hoke County Parks & Recreation	0.50			
Huntersville Parks & Recreation	0.66		0.66	
Jacksonville Recreation & Parks	1.50		1.50	
Kernersville Parks & Recreation	1.00		1.00	
Lee County Parks & Recreation	0.85		0.85	
Lexington Parks & Recreation	6.00		4.00	2.00
Madison-Mayodan Recreation	2.00		1.00	1.00
Matthews Parks & Recreation	1.00			1.00
McDowell County Parks & Recreation	18.00	15.00	18.00	
Mocksville-Davie Parks & Recreation	2.00			2.00
Onslow County Parks & Recreation	5.00			
Person County Parks & Recreation	2.00		2.00	
Pitt County Community Schools & Recreation	2.00			2.00
Reidsville Recreation	1.00	1.00		1.00
Roanoke Rapids Parks & Recreation	8.00		6.00	2.00
Rowan County Parks & Recreation	7.25			7.00
Scotland County Parks & Recreation	3.75		3.75	
Statesville Recreation & Parks			2.00	
Surry County Recreation	1.50		1.50	
Union County Parks & Recreation	3.00		1.00	2.00
Watauga County Parks & Recreation	15.90			
Waynesville Parks & Recreation	0.60		0.60	
Whiteville Parks & Recreation		1.00		
Williamston Parks & Recreation	1.00		1.00	
Winston-Salem Recreation & Parks	18.00		8.00	10.00
Wrightsville Beach Parks & Recreation	2.45		2.45	
Zebulon Parks & Recreation	1.00	4.00		1.00

**Table 29
Single-Use Trails (Pedestrian Fitness)**

Agency	Miles Developed	Miles Undeveloped	ADA Surface	Non-ADA Compliant
Cary Parks, Recreation & Cultural Resources	1.25			1.25
Clinton Recreation & Parks	0.50		0.50	
Edenton-Chowan Parks & Recreation		1.00		
Gibsonville Parks & Recreation	0.50		0.50	
Greensboro Parks & Recreation	2.20		2.20	
Greenville Recreation & Parks	4.50		4.50	
Hope Mills Parks & Recreation	0.60		0.60	
Lee County Parks & Recreation	1.00		1.00	
Statesville Recreation & Parks	1.00			
Winston-Salem Recreation & Parks	7.00		7.00	

Table 30
Single-Use Trails (Pedestrian Nature)

Agency	Miles Developed	Miles Undeveloped	ADA Surface	Non-ADA Compliant
Asheville Parks & Recreation	0.50		0.50	
Avery County Parks & Recreation	1.10	1.00		1.10
Blowing Rock Parks & Recreation	1.60			1.60
Burlington Recreation & Parks	8.00			8.00
Cary Parks, Recreation & Cultural Resources	2.90			2.90
Clayton Parks & Recreation	0.75		0.75	
Currituck County Parks & Recreation	1.00			1.00
Durham Parks & Recreation	2.00			2.00
Edenton-Chowan Parks & Recreation	1.00	2.00	0.50	0.50
Garner Parks & Recreation	2.00			2.00
Gaston County Parks & Recreation	0.50			0.50
Gibsonville Parks & Recreation	0.50			0.50
Graham Recreation & Parks	2.00			2.00
Greensboro Parks & Recreation	4.41		3.61	0.80
Henderson-Vance Recreation & Parks	2.50		1.50	1.00
Hickory Parks & Recreation	1.25			
Jacksonville Recreation & Parks	0.75			0.75
Lee County Parks & Recreation	4.00			4.00
Mecklenburg County Park & Recreation	21.00		0.50	20.50
New Hanover County Parks	0.75		0.75	
Orange County Recreation & Parks	8.25			8.00
Person County Parks & Recreation	4.00			4.00
Rowan County Parks & Recreation	10.00			10.00
Scotland County Parks & Recreation	1.50			1.50
Shelby Parks & Recreation	1.00		1.00	
Winston-Salem Recreation & Parks	3.00		3.00	

**Table 31
Single-Use Trails (Bicycle Only)**

Agency	Miles Developed	Miles Undeveloped	Natural Surface	Hardened Surface
Burlington Recreation & Parks	8.00		8.00	
Catawba County Parks Division	6.00		6.00	
Clayton Parks & Recreation	8.00		8.00	
Davidson Parks & Recreation	5.00		4.00	1.00
Gaston County Parks & Recreation	2.00		2.00	
Lee County Parks & Recreation	5.00		5.00	
Mebane Recreation & Parks	1.00		1.00	
Mocksville-Davie Parks & Recreation	1.00		1.00	
Rocky Mount Parks & Recreation	2.00		1.00	1.00
Rowan County Parks & Recreation	5.00		5.00	
Surry County Recreation	5.00		5.00	
Union County Parks & Recreation	11.00			11.00

**Table 32
Single-Use Trails (Equestrian Only)**

Agency	Miles Developed	Miles Undeveloped	Natural Surface	Hardened Surface
Currituck County Parks & Recreation		1.00		
Mecklenburg County Park & Recreation	13.00		13.00	
Rowan County Parks & Recreation	6.00		6.00	
Surry County Recreation	1.00			1.00
Union County Parks & Recreation	11.00			11.00

**Table 33
Single-Use Trails (Trails for Physically Challenged)**

Agency	Miles Developed	Miles Undeveloped	ADA Surface	Non-ADA Compliant
Avery County Parks & Recreation	0.95			
Blowing Rock Parks & Recreation	1.00		1.00	
Burlington Recreation & Parks	0.50		0.50	
Clayton Parks & Recreation	0.50		0.50	
Cramerton Parks & Recreation	0.70		0.70	
Union County Parks & Recreation	1.00		1.00	

Table 34
Single-Use Trails (Canoe/Kayak)

Agency	Miles Developed	Miles Undeveloped
Burlington Recreation & Parks	1.00	15.00
Cramerton Parks & Recreation		4.50
Edenton-Chowan Parks & Recreation	20.00	2.00
Graham Recreation & Parks	8.00	
Greensboro Parks & Recreation	2.00	
Madison-Mayodan Recreation	2.50	
Mecklenburg County Park & Recreation		83.00
Mocksville-Davie Parks & Recreation	20.00	
Onslow County Parks & Recreation	17.00	
Person County Parks & Recreation	2.00	
Rocky Mount Parks & Recreation	62.00	
Rowan County Parks & Recreation	1.00	
Washington Parks, Recreation & Civic Center		6.00
Wrightsville Beach Parks & Recreation	514.00	

Table 35
Multi-Trails (Pedestrian, Bike, Equestrian)

Agency	Miles Developed	Miles Undeveloped	ADA Surface	Non-ADA Compliant
Cary Parks, Recreation & Cultural Resources	2.40			2.40
Currituck County Parks & Recreation	4.00	1.00	1.00	3.00
Durham Parks & Recreation	3.00			3.00
Mecklenburg County Park & Recreation	14.00			
Orange County Recreation & Parks	7.00			7.00
Pitt County Community Schools & Recreation		6.00		
Rowan County Parks & Recreation	6.00			
Union County Parks & Recreation	1.00		1.00	

Table 36
Multi-Trails (Pedestrian, Bike, In-Line Skate)

Agency	Miles Developed	Miles Undeveloped	ADA Surface	Non-ADA Compliant
Archdale Parks & Recreation	1.50	2.00	1.50	
Asheville Parks & Recreation	6.00			
Avery County Parks & Recreation		1.00		
Black Mountain Recreation & Parks	0.50		0.50	
Burlington Recreation & Parks	14.25			14.25
Carolina Beach Recreation & Parks	1.00	1.00		
Carrboro Recreation & Parks	1.11		1.11	
Cary Parks, Recreation & Cultural Resources	23.60		23.60	
Cramerton Parks & Recreation	1.50	1.00	1.50	
Currituck County Parks & Recreation	1.00			
Davidson Parks & Recreation	1.00		1.00	
Durham Parks & Recreation	14.00		14.00	
Edenton-Chowan Parks & Recreation		2.00		
Elkin Recreation & Parks		2.90		
Garner Parks & Recreation	1.60	12.00	1.30	
Gastonia Parks & Recreation	1.20		1.20	
Greensboro Parks & Recreation	24.61		24.61	
Greenville Recreation & Parks	1.30		1.30	
Hickory Parks & Recreation	2.60			
High Point Parks & Recreation	2.70		2.70	
Hope Mills Parks & Recreation	1.80		1.80	
Jacksonville Recreation & Parks	1.50		1.50	
Lumberton Recreation & Parks	1.75	1.50		
Madison-Mayodan Recreation	2.00		1.00	1.00
Mount Airy Parks and Recreation		2.33	2.33	
New Hanover County Parks	5.25		4.75	0.50
Pasquotank County Parks & Recreation	5.25		1.25	4.00
Pinehurst Parks & Recreation	5.00		0.75	4.25
Raleigh Parks & Recreation	54.65		42.79	11.86
Thomasville Parks & Recreation	0.50			
Union County Parks & Recreation	15.00		1.00	14.00
Washington Parks, Recreation & Civic Center	2.00		2.00	
Williamston Parks & Recreation	0.92		0.92	
Winston-Salem Recreation & Parks	14.00		7.00	7.00

Table 37
Greenways

Agency	Miles Developed	Miles Undeveloped	ADA Surface	Non-ADA Compliant
Apex Parks, Recreation & Cultural Resources	6.30	3.50	4.80	1.50
Archdale Parks & Recreation	1.50		1.50	
Black Mountain Recreation & Parks	1.20			1.20
Burlington Recreation & Parks	0.65		0.65	
Cary Parks, Recreation & Cultural Resources	26.00		26.00	
Cramerton Parks & Recreation	1.50		1.50	
Davidson Parks & Recreation	2.00		2.00	
Edenton-Chowan Parks & Recreation		4.00		
Elkin Recreation & Parks	1.00	2.90	1.00	
Gastonia Parks & Recreation	2.70		2.70	
Graham Recreation & Parks		2.00		
Greensboro Parks & Recreation	15.15		15.15	
Greenville Recreation & Parks	1.30		1.30	
Hickory Parks & Recreation	2.70			
Highlands Parks & Recreation	3.00		1.00	2.00
Huntersville Parks & Recreation	1.50		1.50	
Kannapolis Parks & Recreation	1.10	5.00	1.10	
Lee County Parks & Recreation	0.60		0.60	
Lumberton Recreation & Parks	1.75			
McDowell County Parks & Recreation		5.00		
Mecklenburg County Park & Recreation	24.00	161.00	24.00	
Mitchell County Parks & Recreation	1.00		1.00	
Morrisville Parks, Recreation & Cultural Resources	0.60		0.60	
Newton Parks & Recreation	0.50		0.50	
Pinehurst Parks & Recreation	4.00			4.00
Raleigh Parks & Recreation	616.24	1119.51		
Reidsville Recreation	1.50	5.50		
Rocky Mount Parks & Recreation	6.24		3.12	3.12
Salisbury Parks & Recreation	4.50			
Statesville Recreation & Parks	6.00		6.00	
Thomasville Parks & Recreation	0.75			
Wake Forest Parks & Recreation	2.10	10.00	2.10	
Wilkes County Parks & Recreation	2.00			
Winston-Salem Recreation & Parks	13.75		7.25	6.50

Facilities of Special Interest

Past inventories have included specific tables showing which agencies in the state own the most frequently reported facilities. This year's services study does the opposite. While not organized by region or population class, the following tables list specifically which agencies own facilities in new or growing areas of recreation and for activities where few public facilities currently exist. Comparisons to a specific agency can be made by examining the facilities owned by agencies of like size and/or in the same geographic region.

Table 38
Dog Parks

Agency	Number Reported	Average Acreage
Asheville Parks & Recreation	1	1.00
Black Mountain Recreation & Parks	1	
Carolina Beach Recreation & Parks	1	1.00
Carrboro Recreation & Parks	1	0.31
Cary Parks, Recreation & Cultural Resources	1	1.00
Catawba County Parks Division	1	2.50
Davidson Parks & Recreation	1	2.00
Durham Parks & Recreation	2	2.00
Greensboro Parks & Recreation	1	4.00
Kernersville Parks & Recreation	1	0.12
Mecklenburg County Park & Recreation	3	4.00
New Hanover County Parks	2	2.00
Raleigh Parks & Recreation	2	2.63
Winston-Salem Recreation & Parks	1	171.00

Table 39
Climbing Walls (Outdoors)/Rope Courses

Agency	Climbing Walls (outdoor)	Ropes Course	Ropes Course Average Acres
Blowing Rock Parks & Recreation	1		
Cary Parks, Recreation & Cultural Resources		1	2
Elkin Recreation & Parks	1		
Farmville Parks	1		
Gaston County Parks & Recreation		1	2
Hickory Parks & Recreation		1	
Iredell County Recreation	1		
Rocky Mount Parks & Recreation		1	
Union County Parks & Recreation	1		

Table 40
Disc/Frisbee Golf Courses

Agency	Number Reported	Average Acreage
Asheboro Parks & Recreation	1	
Asheville Parks & Recreation	1	3
Black Mountain Recreation & Parks	1	
Durham Parks & Recreation	3	11
Greensboro Parks & Recreation	1	5
Greenville Recreation & Parks	1	50
Hickory Parks & Recreation	1	
High Point Parks & Recreation	1	20
Iredell County Recreation	1	
Knightdale Parks & Recreation	1	10
Lee County Parks & Recreation	1	10
Lumberton Recreation & Parks	1	
Mecklenburg County Park & Recreation	6	
New Hanover County Parks	1	10
Onslow County Parks & Recreation	1	13
Pasquotank County Parks & Recreation	1	15
Raleigh Parks & Recreation	2	3
Rocky Mount Parks & Recreation	3	
Salisbury Parks & Recreation	1	
Scotland County Parks & Recreation	1	
Shelby Parks & Recreation	1	50
Zebulon Parks & Recreation	1	20

Table 41
Skate Areas (Ice Skating)

Agency	Ice Skating	Ice Skating Area (ASF)	In-Line Skating	In-Line Skate Area (ASF)
Asheville Parks & Recreation			1	10,000
Durham Parks & Recreation			1	
Gastonia Parks & Recreation			1	11,000
Greensboro Parks & Recreation	1			
Greenville Recreation & Parks			1	4,000
Orange County Recreation & Parks	1			
Pinehurst Parks & Recreation			1	14,400
Raleigh Parks & Recreation			1	20,020
Winston-Salem Recreation & Parks	1			

Table 42
Skate Areas (Skateboard Parks)

Agency	Skateboard Parks	Skate Park Area (ASF)
Asheboro Parks & Recreation	1	
Asheville Parks & Recreation	1	17,000
Ayden Recreation & Parks	1	5,000
Cary Parks, Recreation & Cultural Resources	1	12,000
Currituck County Parks & Recreation	1	6,000
Eden Parks & Recreation	1	8,000
Elkin Recreation & Parks	1	3,600
Gastonia Parks & Recreation	1	11,000
Greenville Recreation & Parks	1	12,500
Hickory Parks & Recreation	1	12,000
Jacksonville Recreation & Parks	1	
Madison-Mayodan Recreation	1	27,500
McDowell County Parks & Recreation	1	144
Mecklenburg County Park & Recreation	2	900
Pasquotank County Parks & Recreation	1	7,000
Rocky Mount Parks & Recreation	1	110
Thomasville Parks & Recreation	1	7,000
Watauga County Parks & Recreation	1	
Wilkes County Parks & Recreation	1	

Table 43
Golf Driving Ranges

Agency	Total Number Reported
Asheboro Parks & Recreation	1
Burlington Recreation & Parks	1
Goldsboro Parks & Recreation	1
Greensboro Parks & Recreation	3
Greenville Recreation & Parks	1
High Point Parks & Recreation	1
Madison-Mayodan Recreation	1
Mecklenburg County Parks & Recreation	4
Mooresville Recreation	1
Pasquotank County Parks & Recreation	1
Shelby Parks & Recreation	1
Thomasville Parks & Recreation	1
Winston-Salem Recreation & Parks	2

Table 44
Miniature Golf Courses

Agency	Total Number Reported
Cabarrus County Parks & Recreation	1
High Point Parks & Recreation	1
Kannapolis Parks & Recreation	1
Madison-Mayodan Recreation	1
Rowan County Parks & Recreation	2
Union County Parks & Recreation	2

Table 45
Par 3 9-Hole Courses

Agency	Total Number Reported
Elizabeth City Parks & Recreation	1
Mecklenburg County Park & Recreation	1

Table 46
9-Hole Executive Courses

Agency	Total Number Reported
Asheboro Parks & Recreation	1
Greensboro Parks & Recreation	1
Mecklenburg County Park & Recreation	1
Shelby Parks & Recreation	1

Table 47
18-Hole Courses

Agency	Total Number Reported
Asheville Parks & Recreation	1
Gastonia Parks & Recreation	1
High Point Parks & Recreation	2
Lexington Parks & Recreation	1
Mecklenburg County Park & Recreation	4
Mooresville Recreation	1
Thomasville Parks & Recreation	1
Winston-Salem Recreation & Parks	2

Table 48
18-Hole Championship Courses

Agency	Total Number Reported
Black Mountain Recreation & Parks	1
Burlington Recreation & Parks	1
Goldsboro Parks & Recreation	1
Greensboro Parks & Recreation	2
Greenville Recreation & Parks	1

Table 49
Indoor Swimming Pools

Agency	Total Number Reported	Average Gallons/Pool
Burlington Recreation & Parks	1	300,000
Durham Parks & Recreation	2	
Greensboro Parks & Recreation	2	
Greenville Recreation & Parks	1	125,000
Henderson-Vance Recreation & Parks	1	156,000
Mecklenburg County Park & Recreation	3	800,000
Morrisville Parks, Recreation & Cultural Resources	1	67,000
Mount Airy Parks and Recreation	1	140,000
Orange County Recreation & Parks	1	260,000
Raleigh Parks & Recreation	1	853,000
Roanoke Rapids Parks & Recreation	1	135,000
Rocky Mount Parks & Recreation	1	
Washington Parks, Recreation & Civic Center	1	100,000
Watauga County Parks & Recreation	2	157,000
Waynesville Parks & Recreation	1	153,000

Table 50
Waterslides

Agency	Total Number Reported
Ayden Recreation & Parks	1
Newton Parks & Recreation	2
Rocky Mount Parks & Recreation	2

Table 51
Therapy Pools

Agency	Number Reported	Average Gallons/Pool
Mooresville Recreation	1	
Morrisville Parks, Recreation & Cultural Resources	1	900
Orange County Recreation & Parks	1	126,000
Raleigh Parks & Recreation	1	43,000

Table 52
Spraygrounds

Agency	Total Number Reported
Durham Parks & Recreation	4
Kannapolis Parks & Recreation	1
Mecklenburg County Park & Recreation	4
Raleigh Parks & Recreation	7
Rocky Mount Parks & Recreation	2
Rowan County Parks & Recreation	1
Scotland County Parks & Recreation	1

Contractual Agreements

In addition to budget information, the main focus of the 2006-07 Services Study was to inventory park-owned facilities. Many park and recreation agencies have use agreements to use fields owned by other agencies, such as the local school system. That information is addressed in the inventory information for fields and courts. We also find that park agencies own a particular facility yet find it more beneficial to contract the management, or operation, of that facility to another agency. This year the survey asked respondents to list the facilities that they own but that are managed through a contractual or partnership agreement. Additionally, the survey requested whether the agreement was a written or verbal arrangement. A variety of facilities were listed. Below is a brief listing of the types of facilities reported by the 105 respondents to this year's survey (47.95% response rate).

Table 53
Facilities Owned by Park Department That Are Managed Or Operated through Agreement with Another Agency/Association

Type Facility	# Facilities Reported
Baseball	235
Indoor Basketball	125
Multi-Purpose Fields	178
Outdoor Soccer	146
Outdoor Tennis	325
Softball	100
Total:	1,109

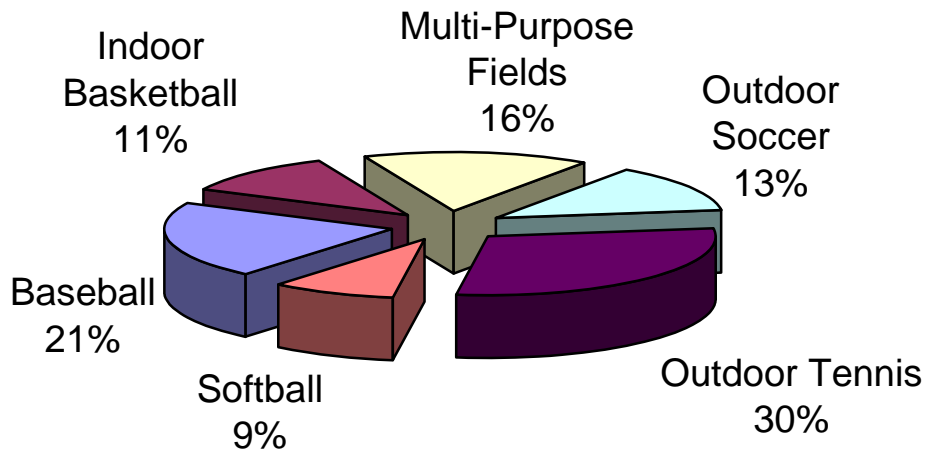
* 22.97% of all recreation facilities being used are through agreements.

** There are 1,386 total facilities utilized with agreements.

Other Facilities:

Football, Horseshoes, Indoor Handball, Indoor Multi-Purpose Courts, Indoor Soccer, Outdoor Basketball, Outdoor Shuffleboard, and Sand Volleyball

Figure 8
Types of Facilities Managed through Contractual Agreement



Percentage of Respondents Using Agreements: 74.29%

The Future

The 2006-2007 Services Study requested data about long-term planning and development. The areas of interest were Capital Improvement Plans, Acreage Needed, New Employees, and Facilities Needed. The data was divided into three distinct year classes: 1-3 years, 3-5 years, and 5-10 years. Some communities have formal Capital Improvement Plans and long-term planning in place, while other professionals are using their professional judgment to predict future growth and trends.

Table 54
Capital Improvement Plans By Community Size

Department Size	CIP 1-3 Years	CIP 3-5 Years	CIP 5-10 Years
A	\$31,821,305	\$18,811,443	\$121,989,054
B	\$3,699,725	\$6,149,267	\$9,040,000
C	\$2,624,726	\$3,601,452	\$5,489,490
D	\$2,975,149	\$3,951,795	\$5,090,647
E	\$1,294,164	\$944,251	\$2,512,500
F	\$681,826	\$737,529	\$8,973,193

*54 of 105 respondents (51.43%) have adopted Capital Improvement Plans.

Table 55
New Employees Needed by Community Size

Department Size	New Employees 1-3 Years	New Employees 3-5 Years	New Employees 5-10 Years
A	17	26	163
B	5	6	7
C	3	3	4
D	3	6	8
E	2	2	2
F	3	15	2

Table 56
Acres Needed by Community Size

Department Size	Acres Needed 1-3	Acres Needed 3-5	Acres Needed 5-10
A	10,698	316	5,440
B	160	157	274
C	28	65	159
D	34	3,637	81
E	27	13	653
F	280	8	32

Appendix A – Major Change

2004-2005 Audited Operating and Capital Expenditures by Individual Agency

Department Type	Salaries	All Other Direct Spending	Construction	Land, Equipment and Existing Structures
Aberdeen Parks & Recreation	\$117,523	\$114,805		\$7,833
Ahoskie Park & Recreation	\$136,795	\$76,608		\$100,401
Alamance County Recreation & Parks	\$613,707	\$551,009		\$31,120
Albemarle Parks & Recreation	\$573,554	\$468,639		\$82,196
Alexander County Recreation	\$76,147	\$177,121		\$3,469
Alleghany County Recreation				\$1,249
Andrews Recreation	\$74,750	\$69,693		
Angier Recreation	\$78,284	\$37,490		\$13,799
Anson County Parks & Recreation	\$226,203	\$482,042	\$16,019	
Apex Parks, Recreation & Cultural Resources	\$870,947	\$800,610	\$547,249	\$2,167,459
Archdale Parks & Recreation	\$269,520	\$292,787		\$323,918
Ashe County Parks & Recreation	\$99,608	\$181,061		\$75,728
Asheboro Parks & Recreation	\$455,461	\$468,436		\$181,471
Asheville Parks & Recreation	\$3,317,978	\$3,841,633	\$1,850,147	\$220,517
Avery County Parks & Recreation	\$78,751	\$88,142		\$8,494
Ayden Recreation & Parks	\$132,337	\$50,464		
Belhaven Parks & Recreation	\$22,299	\$46,010		
Belmont Parks & Recreation	\$148,884	\$273,680		\$2,758
Benson Parks & Recreation	\$175,702	\$145,205		
Bertie County Parks & Recreation	\$57,251	\$110,900		
Bessemer City Recreation	\$161,029	\$153,783		\$13,249
Black Mountain Recreation & Parks	\$499,074	\$517,021	\$12,704	\$97,077
Bladen County Park & Recreation	\$92,982	\$76,816		\$3,404
Blowing Rock Parks & Recreation	\$150,358	\$135,181		\$14,425
Boilings Spring Lakes Parks, Recreation & Community Center	\$59,940	\$37,457		
Brunswick County Parks & Recreation	\$802,332	\$822,590	\$577,399	\$226,033
Buncombe County Recreation Services	\$2,402,164	\$1,135,952		\$760,639
Burke County Recreation & Parks	\$161,168	\$241,099		\$66,343
Burlington Recreation & Parks	\$3,077,447	\$1,600,275		\$596,136
Cabarrus County Parks & Recreation	\$422,787	\$414,337		\$59,040
Canton Recreation & Parks	\$114,608	\$121,426		
Carolina Beach Recreation & Parks	\$286,797	\$274,882		\$27,341
Carrboro Recreation & Parks	\$767,540	\$264,872		\$797,586
Carteret County Parks & Recreation	\$667,419	\$382,761		\$533,000
Cary Parks, Recreation & Cultural Resources	\$3,301,831	\$3,830,040	\$2,730,825	\$104,642
Caswell County Parks & Recreation	\$128,074	\$101,993		
Catawba County Parks Division	\$127,681	\$88,428		\$65,945
Chapel Hill Parks & Recreation	\$1,249,266	\$891,637	\$837,423	
Chatham County Recreation	\$124,906	\$162,638	\$203,851	\$73,235
Cherokee County Recreation	\$75,832	\$132,370	\$21,878	\$21,167

2006-07 M CPRSS, Executive Report

Department Type	Salaries	All Other Direct Spending	Construction	Land, Equipment and Existing Structures
Clay County Recreation	\$67,208	\$68,729		\$16,205
Clayton Parks & Recreation	\$405,869	\$438,376		\$13,220
Clinton Recreation & Parks	\$380,224	\$312,852		\$40,826
Columbus County Parks & Recreation	\$176,015	\$189,425		\$54,332
Concord Parks & Recreation	\$816,829	\$3,773,751		\$19,456
Cornelius Parks & Recreation	\$319,217	\$522,339	\$569,941	
Cramerton Parks & Recreation	\$129,122	\$210,729		\$19,599
Craven County Recreation & Parks	\$297,896	\$345,359		\$10,318
Currituck County Parks & Recreation	\$176,391	\$230,959	\$1,614,222	\$100,653
Dare County Parks & Recreation	\$782,257	\$888,534	\$609,626	\$72,748
Davidson County Recreation	\$190,280	\$217,334	\$100,299	\$36,330
Davidson Parks & Recreation	\$373,917	\$945,061		\$33,316
Dunn Parks & Recreation	\$266,538	\$173,570		\$1,126,708
Duplin County Parks & Recreation	\$161,411	\$70,043		\$6,318
Durham Parks & Recreation	\$6,224,399	\$5,219,866	\$4,890,185	\$134,223
Eden Parks & Recreation	\$433,905	\$482,103	\$135,745	\$100,511
Edenton-Chowan Parks & Recreation	\$468,520	\$317,003		\$39,232
Elizabeth City Parks & Recreation	\$480,650	\$348,634		\$209,937
Elkin Recreation & Parks	\$308,185	\$245,480		\$165,283
Emerald Isle Parks & Recreation	\$345,367	\$112,974		\$64,214
Enfield Parks & Recreation	\$33,232	\$25,188		
Erwin Parks & Recreation	\$82,068	\$128,231	\$147,471	
Farmville Parks	\$56,660	\$107,458		\$41,200
Fayetteville-Cumberland Parks & Recreation	\$3,993,207	\$4,488,436	\$3,071,728	\$189,292
Forest City Parks & Recreation	\$458,670	\$613,328		\$65,952
Forsyth County Parks & Recreation	\$3,146,493	\$3,679,450	\$1,583,937	\$256,527
Franklin County Parks, Recreation & Cultural Resources	\$197,888	\$126,391		\$47,000
Fuquay-Varina Recreation & Parks	\$422,292	\$581,982	\$10,621	\$69,924
Garner Parks & Recreation	\$1,115,902	\$785,289	\$1,844,000	\$247,039
Gaston County Parks & Recreation	\$181,428	\$367,661	\$215,855	\$1,502
Gastonia Parks & Recreation	\$1,636,442	\$660,324	\$265,082	\$7,200
Gates County Parks & Recreation	\$180,498	\$31,178		
Gibsonville Parks & Recreation	\$175,392	\$116,311		\$7,216
Goldsboro Parks & Recreation	\$1,581,555	\$905,743		\$274,005
Graham County Recreation & Parks	\$37,684	\$24,459		\$7,221
Graham Recreation & Parks	\$270,579	\$186,726		\$68,430
Granite Falls Recreation	\$152,918	\$141,403		\$912,709
Greene County Parks & Recreation	\$84,288	\$89,770		
Greensboro Parks & Recreation	\$10,288,455	\$11,616,919	\$607,093	\$1,729,960
Greenville Recreation & Parks	\$3,329,174	\$1,804,162	\$552,915	\$90,820
Hamlet Recreation	\$62,420	\$110,586		
Harnett County Park & Recreation	\$100,066	\$175,931		\$73,706
Havelock Recreation	\$305,619	\$149,017		\$224,109
Haw River Recreation	\$76,765	\$66,489		\$9,169

2006-07 M CPRSS, Executive Report

Department Type	Salaries	All Other Direct Spending	Construction	Land, Equipment and Existing Structures
Haywood County Recreation	\$128,517	\$168,658	\$3,322	\$19,228
Henderson County Parks & Recreation	\$440,524	\$478,249	\$213,531	
Henderson-Vance Recreation & Parks	\$546,253	\$632,560	\$33,876	\$23,848
Hickory Parks & Recreation	\$1,503,591	\$1,327,774		\$218,773
High Point Parks & Recreation	\$3,737,852	\$2,927,165	\$481,059	\$205,705
Highlands Parks & Recreation	\$299,137	\$181,729		\$4,619
Hoke County Parks & Recreation	\$114,208	\$144,976		\$22,684
Holly Springs Parks & Recreation	\$718,420	\$726,624		\$587,012
Hudson Parks & Recreation	\$88,635	\$95,234		\$18,454
Huntersville Parks & Recreation	\$595,254	\$3,183,652		\$754,330
Iredell County Recreation	\$414,210	\$446,993	\$317,840	\$43,438
Jackson County Recreation & Parks	\$358,806	\$515,889		\$310,652
Jacksonville Recreation & Parks	\$797,714	\$1,279,472	\$1,706,742	\$18,937
Jones County Recreation	\$25,179	\$19,027		
Kannapolis Parks & Recreation	\$327,253	\$531,616	\$59,595	\$43,493
Kenly Recreation	\$33,434	\$55,789		\$14,265
Kernersville Parks & Recreation	\$396,221	\$378,341	\$1,042,597	\$42,359
Kinston-Lenoir Parks & Recreation	\$1,348,603	\$1,411,602	\$107,215	\$19,304
Knightdale Parks & Recreation	\$282,891	\$437,969	\$107,215	\$19,304
La Grange Recreation & Parks		\$26,542		\$9,364
Lee County Parks & Recreation	\$544,862	\$455,226	\$182,863	\$5,988
Lenoir Parks & Recreation	\$440,772	\$660,437	\$36,169	\$1,235,222
Lexington Parks & Recreation	\$657,409	\$660,775	\$573,545	
Liberty Recreation	\$93,712	\$35,895		\$12,500
Lillington Recreation	\$53,395	\$76,084		\$5,700
Lincoln County Parks and Recreation	\$337,602	\$251,644		\$50,772
Lincolnton Parks and Recreation			\$421,160	
Louisburg Parks & Recreation	\$53,504	\$95,224		\$18,980
Lumberton Recreation & Parks	\$494,283	\$467,489		\$78,171
Macon County Recreation	\$310,409	\$502,104	\$361,623	\$33,898
Madison County Parks & Recreation	\$42,803	\$29,952		
Madison-Mayodan Recreation	\$79,262	\$231,101	\$197,718	\$2,288
Maiden Parks & Recreation	\$99,386	\$183,754		-\$600
Marshville Parks & Recreation	\$41,197	\$62,533	\$41,800	
Matthews Parks & Recreation	\$70,655	\$143,761		\$21,293
McDowell County Parks & Recreation	\$136,462	\$184,204	\$589,831	\$21,978
Mebane Recreation & Parks	\$279,736	\$457,864	\$482,345	
Mecklenburg County Park & Recreation	\$17,423,600	\$10,942,783	\$10,320,253	\$1,443,821
Mitchell County Parks & Recreation	\$42,779	\$68,442		\$3,269
Mocksville-Davie Parks & Recreation	\$252,188	\$183,994		
Monroe Parks & Recreation	\$2,734,313	\$2,461,008	\$820,844	\$404,668
Moore County Parks & Recreation	\$182,912	\$355,699		\$74,280
Mooresville Recreation	\$660,334	\$1,708,961		\$1,635,131
Morehead City Parks & Recreation	\$187,854	\$295,777	\$199,763	\$339,640

2006-07 MCPRSS, Executive Report

Department Type	Salaries	All Other Direct Spending	Construction	Land, Equipment and Existing Structures
Morganton Recreation & Parks	\$1,226,978	\$756,056	\$175,290	\$22,222
Morrisville Parks, Recreation & Cultural Resources	\$882,035	\$381,780	\$41,838	\$74,311
Mount Airy Parks and Recreation	\$313,492	\$456,904		\$87,261
Mount Holly Parks & Recreation	\$179,035	\$157,347		
North Wilkesboro Parks & Recreation	\$159,731	\$76,925	\$16,619	\$35,903
Nashville Parks & Recreation	\$102,166	\$81,861		
New Bern Recreation & Parks	\$985,636	\$897,768		\$96,132
New Hanover County Parks	\$1,884,402	\$1,968,318	\$1,310,106	\$164,887
Newton Parks & Recreation	\$703,414	\$294,545		\$108,085
Northampton County Recreation	\$71,287	\$30,545		
Norwood Recreation	\$26,527	\$77,548		
Oak Island Parks & Recreation	\$415,141	\$137,247		
Old Fort Parks & Recreation	\$18,785	\$23,894		\$10,571
Onslow County Parks & Recreation	\$549,131	\$404,859		\$496
Orange County Recreation & Parks	\$781,937	\$710,818		\$22,951
Oxford Parks & Recreation	\$308,450	\$91,345		\$2,342
Pamlico County Parks & Recreation	\$96,002	\$135,896		
Pasquotank County Parks & Recreation	\$121,399	\$91,401		\$16,428
Pender County Parks & Recreation	\$88,037	\$105,398	\$230,453	\$18,375
Perquimans County Recreation	\$147,603	\$93,415	\$459,244	
Person County Parks & Recreation	\$409,654	\$452,061	\$8,650	\$61,856
Pinebluff Parks & Recreation	\$12,692	\$21,608		\$24,700
Pinehurst Parks & Recreation	\$212,473	\$594,077	\$81,170	\$240,400
Pineville Parks & Recreation	\$167,615	\$235,735		\$55,899
Pitt County Community Schools & Recreation	\$137,109	\$91,406	\$37,500	
Polk County Recreation	\$118,464	\$164,867		\$7,573
Raleigh Parks & Recreation	\$16,289,774	\$12,342,165	\$6,290,586	\$40,738
Randleman Parks & Recreation	\$119,439	\$77,630		\$47,604
Reidsville Recreation	\$490,624	\$456,927		\$20,890
Richmond County Parks & Recreation	\$43,286	\$160,904		\$15,671
Roanoke Rapids Parks & Recreation	\$529,285	\$270,427		\$24,135
Robersonville Recreation	\$12,585	\$14,313		
Robeson County Parks & Recreation	\$292,298	\$435,599		\$17,308
Rockingham Recreation	\$228,342	\$170,043		\$8,814
Rocky Mount Parks & Recreation	\$2,513,185	\$1,982,462	\$9,067,153	\$1,747,850
Rolesville Parks & Recreation		\$77,921	\$277,633	\$3,438
Rowan County Parks & Recreation	\$946,606	\$941,011	\$2,005,457	\$305,276
Salisbury Parks & Recreation	\$1,252,981	\$1,140,208		\$102,699
Sampson County Parks & Recreation	\$363,279	\$571,141		\$25,275
Scotland County Parks & Recreation	\$225,524	\$353,837	\$515,851	
Selma Parks & Recreation	\$182,505	\$149,096		\$64,686
Shelby Parks & Recreation	\$1,287,711	\$448,551		\$62,983
Siler City Parks & Recreation	\$99,403	\$195,803		\$6,003
Smithfield Parks & Recreation	\$517,236	\$222,666	\$220,229	

2006-07 M CPRSS, Executive Report

Department Type	Salaries	All Other Direct Spending	Construction	Land, Equipment and Existing Structures
Southern Pines Recreation & Parks	\$238,923	\$280,347	\$72,871	
Southport Recreation	\$65,034	\$96,993		
Spindale Recreation	\$111,822	\$81,566		\$1,524
Spring Lake Recreation & Parks	\$204,494	\$120,236		\$6,384
Spruce Pine Parks & Recreation	\$87,872	\$37,261		
Stanley Parks & Recreation	\$57,598	\$133,843		
Statesville Recreation & Parks	\$1,206,933	\$685,514		\$226,345
Stokes County Recreation	\$1,942	\$81,535		
Surry County Recreation	\$162,127	\$333,605		
Swain County-Bryson City Parks & Recreation	\$108,898	\$305,324		\$42,180
Tabor City Parks and Recreation		\$64,933		\$42,054
Tarboro Parks & Recreation	\$594,492	\$519,124		\$37,195
Thomasville Parks & Recreation	\$836,741	\$717,906		\$511,845
Transylvania County Parks & Recreation	\$203,870	\$185,184		\$18,390
Union County Parks & Recreation	\$593,768	\$707,194	\$14,884	\$640,334
Valdese Recreation	\$385,444	\$521,914		
Wake County Parks & Recreation	\$1,255,898	\$916,257	\$1,905,412	\$27,439
Wake Forest Parks & Recreation	\$421,533	\$487,123	\$4,730	\$434,484
Wallace Parks & Recreation	\$145,029	\$161,267		
Warren County Parks & Recreation	\$71,006	\$94,726	\$170,986	\$20,935
Warsaw Recreation & Parks		\$9,134		
Washington County Parks & Recreation	\$31,161	\$99,261		\$6,072
Washington Parks, Recreation & Civic Center	\$694,927	\$635,886		\$90,506
Watauga County Parks & Recreation	\$600,802	\$126,171		\$31,140
Waynesville Parks & Recreation	\$719,558	\$638,467	\$600	\$8,259
Wendell Parks & Recreation	\$223,603	\$206,360		
Whiteville Parks & Recreation	\$140,025	\$196,542	\$431,030	\$9,500
Wilkes County Parks & Recreation	\$256,778	\$357,069	\$130,528	\$60,388
Wilkesboro Parks & Recreation	\$48,420	\$94,767		\$7,850
Williamston Parks & Recreation	\$133,147	\$165,696	\$936,447	
Wilmington Public Service and Facilities	\$3,036,726	\$2,606,933	\$1,246,873	\$85,895
Wilson Parks & Recreation	\$1,837,066	\$2,275,381	\$657,569	\$121,580
Winston-Salem Recreation & Parks	\$4,314,179	\$4,082,247	\$208,087	\$69,844
Winterville Parks & Recreation	\$56,406	\$169,783	\$12,026	
Wrightsville Beach Parks & Recreation	\$255,104	\$135,942		\$5,792
Yadkin County Parks & Recreation	\$96,343	\$76,761		\$3,909
Yancey County Recreation	\$109,651	\$108,491	\$869,299	
Zebulon Parks & Recreation	\$240,604	\$130,955	\$112,205	\$18,804

***If the North Carolina Department of State Treasurer or Local Government Commission did not have reported financial data, then the community was omitted.**

Appendix B – Major Change

Audited 2004-2005 Per Capita Expenditures by Individual Agency

Agency	Total Per Capita	Operating Per Capita	Capital Per Capita
Aberdeen Parks & Recreation	\$56.99	\$55.13	\$1.86
Ahoskie Park & Recreation	\$69.89	\$47.53	\$22.36
Alamance County Recreation & Parks	\$8.63	\$8.41	\$0.22
Albemarle Parks & Recreation	\$71.87	\$66.62	\$5.25
Alexander County Recreation	\$7.15	\$7.06	\$0.10
Alleghany County Recreation	\$0.11		\$0.11
Andrews Recreation	\$77.04	\$77.04	
Angier Recreation	\$32.87	\$29.37	\$3.50
Anson County Parks & Recreation	\$28.11	\$27.49	\$0.62
Apex Parks, Recreation & Cultural Resources	\$161.24	\$61.45	\$99.79
Archdale Parks & Recreation	\$93.56	\$59.37	\$34.20
Ashe County Parks & Recreation	\$13.98	\$11.01	\$2.97
Asheboro Parks & Recreation	\$47.62	\$39.80	\$7.82
Asheville Parks & Recreation	\$126.12	\$97.82	\$28.29
Avery County Parks & Recreation	\$9.73	\$9.26	\$0.47
Ayden Recreation & Parks	\$38.23	\$38.23	
Belhaven Parks & Recreation	\$35.28	\$35.28	
Belmont Parks & Recreation	\$46.62	\$46.31	\$0.30
Benson Parks & Recreation	\$94.94	\$94.94	
Bertie County Parks & Recreation	\$8.56	\$8.56	
Bessemer City Recreation	\$61.18	\$58.71	\$2.47
Black Mountain Recreation & Parks	\$146.33	\$132.06	\$14.27
Bladen County Park & Recreation	\$5.27	\$5.17	\$0.10
Blowing Rock Parks & Recreation	\$210.21	\$200.10	\$10.11
Boilings Spring Lakes Parks, Recreation & Community Center	\$25.86	\$25.86	
Brunswick County Parks & Recreation	\$27.14	\$18.16	\$8.98
Buncombe County Recreation Services	\$19.83	\$16.32	\$3.51
Burke County Recreation & Parks	\$5.31	\$4.56	\$0.75
Burlington Recreation & Parks	\$111.51	\$98.91	\$12.60
Cabarrus County Parks & Recreation	\$5.96	\$5.56	\$0.39
Canton Recreation & Parks	\$57.25	\$57.25	
Carolina Beach Recreation & Parks	\$104.44	\$99.59	\$4.85
Carrboro Recreation & Parks	\$102.83	\$58.01	\$44.82
Carteret County Parks & Recreation	\$25.23	\$16.73	\$8.49
Cary Parks, Recreation & Cultural Resources	\$85.95	\$61.50	\$24.45
Caswell County Parks & Recreation	\$9.68	\$9.68	
Catawba County Parks Division	\$1.89	\$1.45	\$0.44
Chapel Hill Parks & Recreation	\$56.84	\$40.86	\$15.98
Chatham County Recreation	\$10.07	\$5.13	\$4.94
Cherokee County Recreation	\$9.60	\$7.95	\$1.64

2006-07 MCPRSS, Executive Report

Agency	Total Per Capita	Operating Per Capita	Capital Per Capita
Clay County Recreation	\$15.41	\$13.76	\$1.64
Clayton Parks & Recreation	\$74.02	\$72.88	\$1.14
Clinton Recreation & Parks	\$84.41	\$79.72	\$4.70
Columbus County Parks & Recreation	\$7.70	\$6.70	\$1.00
Concord Parks & Recreation	\$72.68	\$72.37	\$0.31
Cornelius Parks & Recreation	\$83.74	\$49.93	\$33.81
Cramerton Parks & Recreation	\$114.11	\$107.89	\$6.22
Craven County Recreation & Parks	\$7.05	\$6.94	\$0.11
Currituck County Parks & Recreation	\$92.33	\$17.72	\$74.61
Dare County Parks & Recreation	\$67.64	\$48.03	\$19.61
Davidson County Recreation	\$3.53	\$2.64	\$0.89
Davidson Parks & Recreation	\$165.68	\$161.60	\$4.08
Dunn Parks & Recreation	\$159.62	\$44.84	\$114.78
Duplin County Parks & Recreation	\$4.58	\$4.46	\$0.12
Durham Parks & Recreation	\$67.99	\$47.25	\$20.74
Eden Parks & Recreation	\$73.05	\$58.07	\$14.98
Edenton-Chowan Parks & Recreation	\$57.00	\$54.29	\$2.71
Elizabeth City Parks & Recreation	\$55.07	\$43.94	\$11.12
Elkin Recreation & Parks	\$172.20	\$132.61	\$39.59
Emerald Isle Parks & Recreation	\$137.41	\$120.52	\$16.89
Enfield Parks & Recreation	\$25.11	\$25.11	
Erwin Parks & Recreation	\$74.97	\$44.07	\$30.90
Farmville Parks	\$44.53	\$35.59	\$8.94
Fayetteville-Cumberland Parks & Recreation	\$38.48	\$27.79	\$10.69
Forest City Parks & Recreation	\$156.25	\$147.19	\$9.06
Forsyth County Parks & Recreation	\$26.56	\$20.92	\$5.64
Franklin County Parks, Recreation & Cultural Resources	\$6.86	\$5.99	\$0.87
Fuquay-Varina Recreation & Parks	\$88.87	\$82.27	\$6.60
Garner Parks & Recreation	\$178.18	\$84.85	\$93.32
Gaston County Parks & Recreation	\$3.95	\$2.83	\$1.12
Gastonia Parks & Recreation	\$36.57	\$32.70	\$3.88
Gates County Parks & Recreation	\$18.87	\$18.87	
Gibsonville Parks & Recreation	\$64.72	\$63.15	\$1.56
Goldsboro Parks & Recreation	\$72.31	\$65.14	\$7.18
Graham County Recreation & Parks	\$8.54	\$7.65	\$0.89
Graham Recreation & Parks	\$37.49	\$32.61	\$4.88
Granite Falls Recreation	\$253.47	\$61.81	\$191.67
Greene County Parks & Recreation	\$8.63	\$8.63	
Greensboro Parks & Recreation	\$102.15	\$92.30	\$9.85
Greenville Recreation & Parks	\$83.91	\$74.56	\$9.35
Hamlet Recreation	\$29.64	\$29.64	
Harnett County Park & Recreation	\$3.44	\$2.72	\$0.73
Havelock Recreation	\$30.23	\$20.25	\$9.98
Haw River Recreation	\$76.79	\$72.17	\$4.62

2006-07 M CPRSS, Executive Report

Agency	Total Per Capita	Operating Per Capita	Capital Per Capita
Haywood County Recreation	\$5.65	\$5.25	\$0.40
Henderson County Parks & Recreation	\$11.58	\$9.40	\$2.18
Henderson-Vance Recreation & Parks	\$28.35	\$27.02	\$1.32
Hickory Parks & Recreation	\$80.23	\$74.47	\$5.75
High Point Parks & Recreation	\$79.49	\$72.06	\$7.43
Highlands Parks & Recreation	\$508.89	\$504.05	\$4.84
Hoke County Parks & Recreation	\$6.93	\$6.37	\$0.56
Holly Springs Parks & Recreation	\$133.78	\$95.13	\$38.64
Hudson Parks & Recreation	\$65.33	\$59.37	\$5.96
Huntersville Parks & Recreation	\$143.25	\$119.41	\$23.84
Iredell County Recreation	\$8.75	\$6.16	\$2.59
Jackson County Recreation & Parks	\$33.15	\$24.47	\$8.69
Jacksonville Recreation & Parks	\$52.01	\$28.41	\$23.60
Jones County Recreation	\$4.31	\$4.31	
Kannapolis Parks & Recreation	\$23.97	\$21.40	\$2.57
Kenly Recreation	\$55.76	\$48.07	\$7.69
Kernersville Parks & Recreation	\$87.40	\$36.40	\$50.99
Kinston-Lenoir Parks & Recreation	\$49.53	\$47.36	\$2.17
Knightdale Parks & Recreation	\$122.14	\$103.90	\$18.24
La Grange Recreation & Parks	\$12.79	\$9.45	\$3.33
Lee County Parks & Recreation	\$22.10	\$18.59	\$3.51
Lenoir Parks & Recreation	\$128.55	\$59.67	\$68.89
Lexington Parks & Recreation	\$90.44	\$63.02	\$27.42
Liberty Recreation	\$51.14	\$46.64	\$4.50
Lillington Recreation	\$44.60	\$42.72	\$1.88
Lincoln County Parks and Recreation	\$9.21	\$8.47	\$0.73
Lincolnton Parks and Recreation	\$39.80		\$39.80
Louisburg Parks & Recreation	\$46.02	\$40.81	\$5.21
Lumberton Recreation & Parks	\$45.98	\$42.52	\$3.46
Macon County Recreation	\$37.11	\$24.96	\$12.15
Madison County Parks & Recreation	\$3.58	\$3.58	
Madison-Mayodan Recreation	\$109.43	\$66.54	\$42.88
Maiden Parks & Recreation	\$85.59	\$85.41	\$0.18
Marshville Parks & Recreation	\$52.69	\$37.56	\$15.13
Matthews Parks & Recreation	\$9.26	\$8.43	\$0.84
McDowell County Parks & Recreation	\$21.60	\$7.43	\$14.17
Mebane Recreation & Parks	\$150.61	\$91.06	\$59.55
Mecklenburg County Park & Recreation	\$50.40	\$35.63	\$14.77
Mitchell County Parks & Recreation	\$7.21	\$7.00	\$0.21
Mocksville-Davie Parks & Recreation	\$11.20	\$11.20	
Monroe Parks & Recreation	\$197.84	\$160.08	\$37.76
Moore County Parks & Recreation	\$7.58	\$6.66	\$0.92
Mooresville Recreation	\$173.16	\$102.46	\$70.71
Morehead City Parks & Recreation	\$124.62	\$58.91	\$65.71

2006-07 M CPRSS, Executive Report

Agency	Total Per Capita	Operating Per Capita	Capital Per Capita
Morganton Recreation & Parks	\$128.19	\$116.58	\$11.61
Morrisville Parks, Recreation & Cultural Resources	\$107.57	\$98.51	\$9.05
Mount Airy Parks and Recreation	\$99.97	\$89.80	\$10.17
Mount Holly Parks & Recreation	\$34.20	\$34.20	
North Wilkesboro Parks & Recreation	\$69.38	\$56.78	\$12.60
Nashville Parks & Recreation	\$39.15	\$39.15	
New Bern Recreation & Parks	\$81.37	\$77.42	\$3.95
New Hanover County Parks	\$29.54	\$21.36	\$8.18
Newton Parks & Recreation	\$84.59	\$76.33	\$8.27
Northampton County Recreation	\$4.72	\$4.72	
Norwood Recreation	\$36.42	\$36.42	
Oak Island Parks & Recreation	\$71.64	\$71.64	
Old Fort Parks & Recreation	\$55.01	\$44.09	\$10.92
Onslow County Parks & Recreation	\$6.05	\$6.05	
Orange County Recreation & Parks	\$12.42	\$12.24	\$0.19
Oxford Parks & Recreation	\$46.96	\$46.69	\$0.27
Pamlico County Parks & Recreation	\$17.75	\$17.75	
Pasquotank County Parks & Recreation	\$5.90	\$5.47	\$0.42
Pender County Parks & Recreation	\$9.50	\$4.16	\$5.35
Perquimans County Recreation	\$57.62	\$19.83	\$37.79
Person County Parks & Recreation	\$25.11	\$23.21	\$1.90
Pinebluff Parks & Recreation	\$46.27	\$26.90	\$19.37
Pinehurst Parks & Recreation	\$102.31	\$73.15	\$29.16
Pineville Parks & Recreation	\$67.86	\$59.60	\$8.26
Pitt County Community Schools & Recreation	\$1.86	\$1.60	\$0.26
Polk County Recreation	\$15.31	\$14.91	\$0.40
Raleigh Parks & Recreation	\$103.33	\$84.62	\$18.71
Randleman Parks & Recreation	\$59.85	\$48.21	\$11.64
Reidsville Recreation	\$66.24	\$64.81	\$1.43
Richmond County Parks & Recreation	\$4.71	\$4.37	\$0.34
Roanoke Rapids Parks & Recreation	\$49.27	\$47.83	\$1.44
Robersonville Recreation	\$16.39	\$16.39	
Robeson County Parks & Recreation	\$5.84	\$5.70	\$0.14
Rockingham Recreation	\$42.94	\$42.01	\$0.93
Rocky Mount Parks & Recreation	\$271.99	\$79.86	\$192.13
Rolesville Parks & Recreation	\$206.08	\$44.73	\$161.35
Rowan County Parks & Recreation	\$31.49	\$14.16	\$17.33
Salisbury Parks & Recreation	\$85.89	\$82.36	\$3.53
Sampson County Parks & Recreation	\$15.10	\$14.70	\$0.40
Scotland County Parks & Recreation	\$29.73	\$15.73	\$14.00
Selma Parks & Recreation	\$57.93	\$48.47	\$9.46
Shelby Parks & Recreation	\$86.19	\$83.17	\$3.02
Siler City Parks & Recreation	\$37.95	\$37.19	\$0.76
Smithfield Parks & Recreation	\$78.88	\$60.79	\$18.09

2006-07 M CPRSS, Executive Report

Agency	Total Per Capita	Operating Per Capita	Capital Per Capita
Southern Pines Recreation & Parks	\$50.21	\$44.03	\$6.18
Southport Recreation	\$60.53	\$60.53	
Spindale Recreation	\$49.77	\$49.38	\$0.39
Spring Lake Recreation & Parks	\$40.35	\$39.57	\$0.78
Spruce Pine Parks & Recreation	\$61.86	\$61.86	
Stanley Parks & Recreation	\$63.18	\$63.18	
Statesville Recreation & Parks	\$83.60	\$74.67	\$8.93
Stokes County Recreation	\$1.81	\$1.81	
Surry County Recreation	\$6.79	\$6.79	
Swain County-Bryson City Parks & Recreation	\$33.60	\$30.49	\$3.10
Tabor City Parks and Recreation	\$41.60	\$25.25	\$16.35
Tarboro Parks & Recreation	\$107.69	\$104.21	\$3.48
Thomasville Parks & Recreation	\$79.22	\$59.60	\$19.62
Transylvania County Parks & Recreation	\$13.64	\$13.02	\$0.62
Union County Parks & Recreation	\$12.13	\$8.06	\$4.06
Valdese Recreation	\$199.20	\$199.20	
Wake County Parks & Recreation	\$5.44	\$2.88	\$2.56
Wake Forest Parks & Recreation	\$68.10	\$45.91	\$22.19
Wallace Parks & Recreation	\$86.87	\$86.87	
Warren County Parks & Recreation	\$17.69	\$8.20	\$9.49
Warsaw Recreation & Parks	\$2.92	\$2.92	
Washington County Parks & Recreation	\$10.17	\$9.72	\$0.45
Washington Parks, Recreation & Civic Center	\$144.50	\$135.30	\$9.20
Watauga County Parks & Recreation	\$17.66	\$16.93	\$0.73
Waynesville Parks & Recreation	\$143.41	\$142.49	\$0.93
Wendell Parks & Recreation	\$85.28	\$85.28	
Whiteville Parks & Recreation	\$152.31	\$65.97	\$86.34
Wilkes County Parks & Recreation	\$12.03	\$9.18	\$2.85
Wilkesboro Parks & Recreation	\$47.53	\$45.06	\$2.47
Williamston Parks & Recreation	\$212.94	\$51.52	\$161.43
Wilmington Public Service and Facilities	\$71.82	\$58.10	\$13.72
Wilson Parks & Recreation	\$102.30	\$86.01	\$16.30
Winston-Salem Recreation & Parks	\$43.68	\$42.28	\$1.40
Winterville Parks & Recreation	\$31.01	\$29.44	\$1.57
Wrightsville Beach Parks & Recreation	\$149.86	\$147.68	\$2.19
Yadkin County Parks & Recreation	\$4.73	\$4.63	\$0.10
Yancey County Recreation	\$59.91	\$12.02	\$47.89
Zebulon Parks & Recreation	\$109.11	\$80.67	\$28.44

*The information presented may appear contradictory. All information provided by the departments responding to the survey was entered and analyzed exactly as reported.

Appendix C - New

Budget Differences, Percent of Change and Total Government Budget

Department	2004-2005 Audited Total Budget	2006-2007 Projected Budget	Difference	Percent of Change	2006-2007 Total Government Budget
Apex Parks, Recreation & Cultural Resources	\$4,386,265	\$3,261,589	-\$1,124,676	-25.64%	\$54,942,516
Archdale Parks & Recreation	\$886,225	\$976,475	\$90,250	10.18%	\$13,503,216
Asheboro Parks & Recreation	\$1,105,368	\$1,276,608	\$171,240	15.49%	\$19,746,481
Asheville Parks & Recreation	\$9,230,275	\$8,217,973	-\$1,012,302	-10.97%	\$116,936,971
Avery County Parks & Recreation	\$175,387	\$302,572	\$127,185	72.52%	\$25,968,188
Ayden Recreation & Parks	\$182,801	\$267,260	\$84,459	46.20%	\$13,500,000
Bertie County Parks & Recreation	\$168,151	\$171,276	\$3,125	1.86%	\$25,213,406
Black Mountain Recreation & Parks	\$1,125,876	\$824,835	-\$301,041	-26.74%	\$9,469,735
Blowing Rock Parks & Recreation	\$299,964	\$415,865	\$115,901	38.64%	\$5,698,125
Burke County Recreation & Parks	\$468,610	\$1,132,345	\$663,735	141.64%	\$62,000,000
Burlington Recreation & Parks	\$5,273,858	\$5,057,317	-\$216,541	-4.11%	\$44,250,643
Cabarrus County Parks & Recreation	\$896,164	\$1,178,325	\$282,161	31.49%	\$172,026,122
Canton Recreation & Parks	\$236,034	\$547,275	\$311,241	131.86%	\$7,118,450
Carolina Beach Recreation & Parks	\$589,020	\$448,089	-\$140,931	-23.93%	\$13,954,035
Carrboro Recreation & Parks	\$1,829,998	\$1,198,757	-\$631,241	-34.49%	\$17,369,415
Carteret County Parks & Recreation	\$1,583,180	\$1,332,220	-\$250,960	-15.85%	\$72,631,436
Cary Parks, Recreation & Cultural Resources	\$9,967,338	\$24,070,465	\$14,103,127	141.49%	\$222,698,059
Catawba County Parks Division	\$282,054	\$241,385	-\$40,669	-14.42%	\$199,362,302
Clayton Parks & Recreation	\$857,465	\$853,504	-\$3,961	-0.46%	\$34,592,303
Clinton Recreation & Parks	\$733,902	\$840,719	\$106,817	14.55%	\$11,267,472
Cramerton Parks & Recreation	\$359,450	\$425,980	\$66,530	18.51%	\$4,350,685
Currituck County Parks & Recreation	\$2,122,225	\$607,971	-\$1,514,254	-71.35%	\$56,685,470
Davidson Parks & Recreation	\$1,352,294	\$1,354,427	\$2,133	0.16%	\$7,036,590
Durham Parks & Recreation	\$16,468,673	\$7,952,890	-\$8,515,783	-51.71%	\$342,608,422
Eden Parks & Recreation	\$1,152,264	\$1,080,400	-\$71,864	-6.24%	\$19,606,800
Edenton-Chowan Parks & Recreation	\$824,755	\$898,755	\$74,000	8.97%	\$21,380,000
Elizabeth City Parks & Recreation	\$1,039,221	\$1,725,455	\$686,234	66.03%	\$15,646,253
Elkin Recreation & Parks	\$718,948	\$617,781	-\$101,167	-14.07%	\$5,405,776
Farmville Parks	\$205,318	\$166,763	-\$38,555	-18.78%	\$12,207,803
Garner Parks & Recreation	\$3,992,230	\$1,469,485	-\$2,522,745	-63.19%	\$70,135,722
Gaston County Parks & Recreation	\$766,446	\$1,416,283	\$649,837	84.79%	\$216,416,695
Gastonia Parks & Recreation	\$2,569,048	\$2,748,969	\$179,921	7.00%	\$162,467,781
Gibsonville Parks & Recreation	\$298,919	\$262,955	-\$35,964	-12.03%	\$5,401,050
Goldboro Parks & Recreation	\$2,761,303	\$2,733,241	-\$28,062	-1.02%	\$42,400,000
Graham Recreation & Parks	\$525,735	\$791,000	\$265,265	50.46%	\$15,873,900
Greensboro Parks & Recreation	\$24,242,427	\$23,359,281	-\$883,146	-3.64%	\$386,012,991
Greenville Recreation & Parks	\$5,777,071	\$6,235,577	\$458,506	7.94%	\$80,961,744
Havelock Recreation	\$678,745	\$755,000	\$76,255	11.23%	\$16,000,000
Haw River Recreation	\$152,423	\$168,812	\$16,389	10.75%	\$3,292,572
Haywood County Recreation	\$319,725	\$373,767	\$54,042	16.90%	\$68,670,168
Henderson-Vance Recreation & Parks	\$1,236,537	\$1,565,705	\$329,168	26.62%	\$70,000,746
Hickory Parks & Recreation	\$3,050,138	\$3,569,603	\$519,465	17.03%	\$76,696,789
High Point Parks & Recreation	\$7,351,781	\$8,407,203	\$1,055,422	14.36%	\$274,868,135
Highlands Parks & Recreation	\$485,485	\$816,000	\$330,515	68.08%	\$10,000,000

2006-07 M CPRSS, Executive Report

Department	2004-2005 Audited Total Budget	2006-2007 Projected Budget	Difference	Percent of Change	2006-2007 Total Government Budget
Hoke County Parks & Recreation	\$281,868	\$500,000	\$218,132	77.39%	
Huntersville Parks & Recreation	\$4,533,236	\$2,070,329	-\$2,462,907	-54.33%	\$35,797,313
Iredell County Recreation	\$1,222,481	\$1,211,470	-\$11,011	-0.90%	\$142,804,600
Jacksonville Recreation & Parks	\$3,802,865	\$2,999,757	-\$803,108	-21.12%	\$128,901,523
Kannapolis Parks & Recreation	\$961,957	\$1,342,013	\$380,056	39.51%	\$37,678,219
Kernersville Parks & Recreation	\$1,859,518	\$1,268,259	-\$591,259	-31.80%	\$22,100,000
Knightdale Parks & Recreation	\$847,379	\$844,382	-\$2,997	-0.35%	\$8,368,707
Lee County Parks & Recreation	\$1,188,939	\$1,169,603	-\$19,336	-1.63%	\$56,366,524
Lexington Parks & Recreation	\$1,891,729	\$591,508	-\$1,300,221	-68.73%	\$99,987,606
Liberty Recreation	\$142,107	\$138,807	-\$3,300	-2.32%	\$1,893,969
Lumberton Recreation & Parks	\$1,039,943	\$1,146,240	\$106,297	10.22%	\$68,512,220
Madison-Mayodan Recreation	\$510,369	\$483,613	-\$26,756	-5.24%	\$8,286,455
Matthews Parks & Recreation	\$235,709	\$901,458	\$665,749	282.45%	\$16,873,254
McDowell County Parks & Recreation	\$932,475	\$342,689	-\$589,786	-63.25%	\$33,941,873
Mebane Recreation & Parks	\$1,219,945	\$655,645	-\$564,300	-46.26%	\$12,458,397
Mecklenburg County Park & Recreation	\$40,130,457	\$33,792,369	-\$6,338,088	-15.79%	\$1,330,651,562
Mitchell County Parks & Recreation	\$114,490	\$117,459	\$2,969	2.59%	\$17,963,543
Mocksville-Davie Parks & Recreation	\$436,182	\$499,679	\$63,497	14.56%	\$6,046,702
Mooresville Recreation	\$4,004,426	\$3,436,049	-\$568,377	-14.19%	\$54,051,154
Morrisville Parks, Recreation & Cultural Resources	\$1,379,964	\$2,300,000	\$920,036	66.67%	\$19,700,000
Mount Airy Parks and Recreation	\$857,657	\$1,284,033	\$426,376	49.71%	\$11,637,764
New Hanover County Parks	\$5,327,713	\$3,558,449	-\$1,769,264	-33.21%	\$383,178,141
Newton Parks & Recreation	\$1,106,044	\$1,389,050	\$283,006	25.59%	\$29,363,450
Onslow County Parks & Recreation	\$954,486	\$1,320,826	\$366,340	38.38%	\$144,000,000
Orange County Recreation & Parks	\$1,515,706	\$1,623,620	\$107,914	7.12%	\$163,473,184
Pasquotank County Parks & Recreation	\$229,228	\$590,194	\$360,966	157.47%	\$36,297,918
Person County Parks & Recreation	\$932,221	\$1,440,251	\$508,030	54.50%	\$49,160,379
Pinehurst Parks & Recreation	\$1,128,120	\$1,300,000	\$171,880	15.24%	\$13,400,000
Pitt County Community Schools & Recreation	\$266,015	\$429,000	\$162,985	61.27%	\$199,794,607
Raleigh Parks & Recreation	\$34,963,263	\$48,788,967	\$13,825,704	39.54%	\$513,638,733
Reidsville Recreation	\$968,441	\$1,064,354	\$95,913	9.90%	\$14,000,000
Roanoke Rapids Parks & Recreation	\$823,847	\$1,567,504	\$743,657	90.27%	\$11,618,006
Robeson County Parks & Recreation	\$745,205	\$676,639	-\$68,566	-9.20%	\$127,496,457
Rocky Mount Parks & Recreation	\$15,310,650	\$8,708,870	-\$6,601,780	-43.12%	\$193,854,708
Rolesville Parks & Recreation	\$358,992	\$200,732	-\$158,260	-44.08%	\$1,871,088
Rowan County Parks & Recreation	\$4,198,350	\$2,398,896	-\$1,799,454	-42.86%	\$124,392,444
Salisbury Parks & Recreation	\$2,495,888	\$2,011,902	-\$483,986	-19.39%	\$55,605,065
Sampson County Parks & Recreation	\$959,695	\$922,931	-\$36,764	-3.83%	\$89,669,819
Scotland County Parks & Recreation	\$1,095,212	\$642,913	-\$452,299	-41.30%	\$28,508,578
Selma Parks & Recreation	\$396,287	\$332,759	-\$63,528	-16.03%	\$14,221,000
Shelby Parks & Recreation	\$1,799,245	\$1,750,000	-\$49,245	-2.74%	\$62,895,000
Statesville Recreation & Parks	\$2,118,792	\$4,311,654	\$2,192,862	103.50%	\$74,004,093
Surry County Recreation	\$495,732	\$515,202	\$19,470	3.93%	\$68,654,925
Thomasville Parks & Recreation	\$2,066,492	\$997,719	-\$1,068,773	-51.72%	\$28,281,000
Transylvania County Parks & Recreation	\$407,444	\$471,665	\$64,221	15.76%	\$51,627,708
Union County Parks & Recreation	\$1,956,180	\$3,617,821	\$1,661,641	84.94%	\$250,577,561
Wake Forest Parks & Recreation	\$1,347,870	\$2,097,865	\$749,995	55.64%	\$35,524,920
Warren County Parks & Recreation	\$357,653	\$191,388	-\$166,265	-46.49%	\$22,941,210
Washington Parks, Recreation & Civic Center	\$1,421,319	\$1,386,400	-\$34,919	-2.46%	\$54,000,000

2006-07 M CPRSS, Executive Report

Department	2004-2005 Audited Total Budget	2006-2007 Projected Budget	Difference	Percent of Change	2006-2007 Total Government Budget
Watauga County Parks & Recreation	\$758,113	\$881,768	\$123,655	16.31%	\$49,020,455
Waynesville Parks & Recreation	\$1,366,884	\$2,170,480	\$803,596	58.79%	\$23,402,310
Whiteville Parks & Recreation	\$777,097	\$370,100	-\$406,997	-52.37%	\$7,300,000
Wilkes County Parks & Recreation	\$804,763	\$696,128	-\$108,635	-13.50%	\$68,465,921
Williamston Parks & Recreation	\$1,235,290	\$411,723	-\$823,567	-66.67%	\$9,944,766
Winston-Salem Recreation & Parks	\$8,674,357	\$3,275,970	-\$5,398,387	-62.23%	\$329,300,620
Wrightsville Beach Parks & Recreation	\$396,838	\$557,039	\$160,201	40.37%	\$8,301,617
Zebulon Parks & Recreation	\$502,568	\$497,400	-\$5,168	-1.03%	\$5,985,000

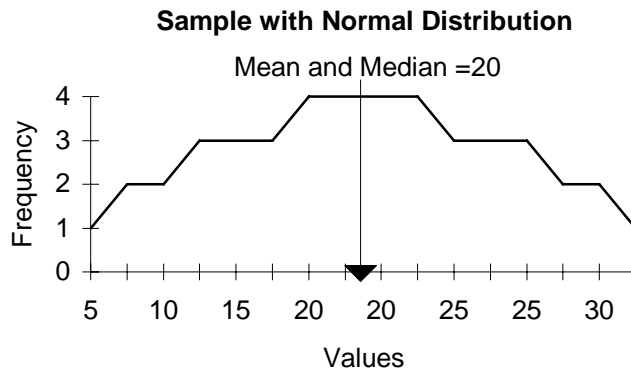
Appendix D

The mean or average provides a measure of central tendency for a sample of values or observations with a normal (bell-shape) frequency distribution. For a sample of values with a nonsymmetric or skewed distribution, the mean is sensitive or influenced by the skewness of the distribution. Another measure of central tendency is the median. While the mean reflects the calculated midpoint of a set of values, the median measures the exact midpoint of a set of values when the values are ordered in magnitude, lowest to highest. The median is robust, therefore, it provides a better description of the midpoint for a sample with a nonsymmetric distribution.

Mean Example

For a sample of values (5,10,15,20,25,30,10,15,20,25,30,15,20,25,35,20) with a normal frequency distribution, the mean equals 20. The mean and the midpoint of the distribution curve are the same (see Example 1).

Example 1

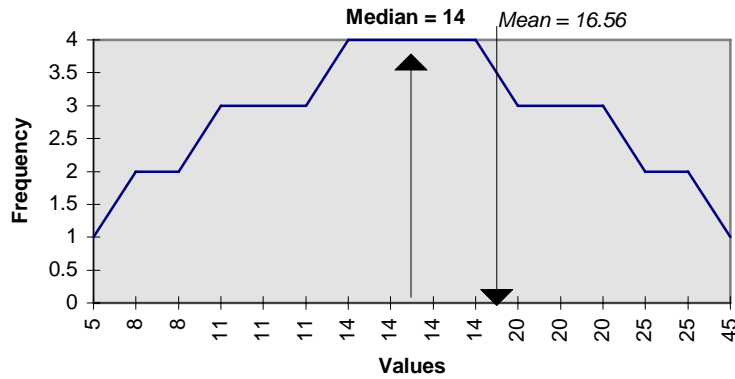


Median Example

For the following sample of values (5,8,11,14,20,25,8,11,14,20,25,11,14,45,20,14) the mean equals 16.56. This sample has a nonsymmetric frequency distribution. The presence of an abnormally large value, 45, skews the sample distribution to the right. Therefore, the mean is influenced by the outlying value. When the sample values are ordered in magnitude, the median for the sample equals 14. The median is not influenced by the outlier, therefore, it provides a better measure of central tendency for the sample (see Example 2).

Example 2

Sample with Nonsymmetric Distribution



Mean and median results from the Municipal and County Services Study, Fiscal Year 2006-2007, provide significant information to local government park and recreation agencies if interpreted correctly. If the mean and median values are very close, the sample has a normal frequency distribution and the mean offers a good measure of the midpoint. If significant difference exists between the mean and median, lean towards using the median as the measure of central tendency. This sample possesses a nonsymmetric distribution and suffers skewness. When the mean is significantly higher than the median, abnormally high values skew the sample. When the median is significantly larger than the mean, abnormally low values skew the sample.