



Welcome Back and State of the College

Mary C. Watzin, Dean | August 18, 2017



Welcome New College Faculty and Staff!



Dean's Office

- **Shane Jarvis** – Assistant Dean, Finance and Business
- **John Grimes** – Senior HR Specialist
- **Tori Edmonson** – Accountant
- **Alex Loflin** – Student Recruiter
- **Meg Smigielska** – Pre-Award Accountant

Forestry & Environmental Resources

- **Mary Lou Addor** – Coordinator Sentinel Landscapes
- **Dominic Chirico** – Vehicle Pool and Field Equipment Supervisor
- **Shelley English** – Extension Support Specialist
- **Nichole Howe** – Advisor
- **Peter Lazaro** – Research Associate
- **Kimber Lunsford** – Assistant Director of Undergraduate Programs
- **Robert Scheller** – Professor, CFEP Cluster in Emerging Plant Diseases and Global Food Security
- **Morgan Schulte** – Research Associate
- **Louise Vaughn** – Extension Associate

Parks, Recreation & Tourism Management

- **Dr. Kangjae (Jerry) Lee** – Assistant Professor
- **Elizabeth Mazak** – Project Manager
- **Gabriella Sinkovic** – PGM Coordinator





Forest Biomaterials

- **Alex White** – SMT Program Coordinator
- **Nathalie Lavoine** – Assistant Professor (January)

Environmental First Year Program (ENVFY)

- **Dr. Steph Jeffries – Director**
- **Nichole Howe – Advisor**



Recruitments Underway

College Staff

- IT Director
- Business Officer
- Post-Award Accountant



Faculty

- Extension Forestry
- Extension Wood Products
- Molecular Genetics and Forest Health
- CFEP Global Change
- CFEP Global WaSH

Status and Health of CNR

- Incoming Class of Students
- Enrollment Trends
- **Base Budget of the College**
- Grant Funding and Trends
- Gift Funding



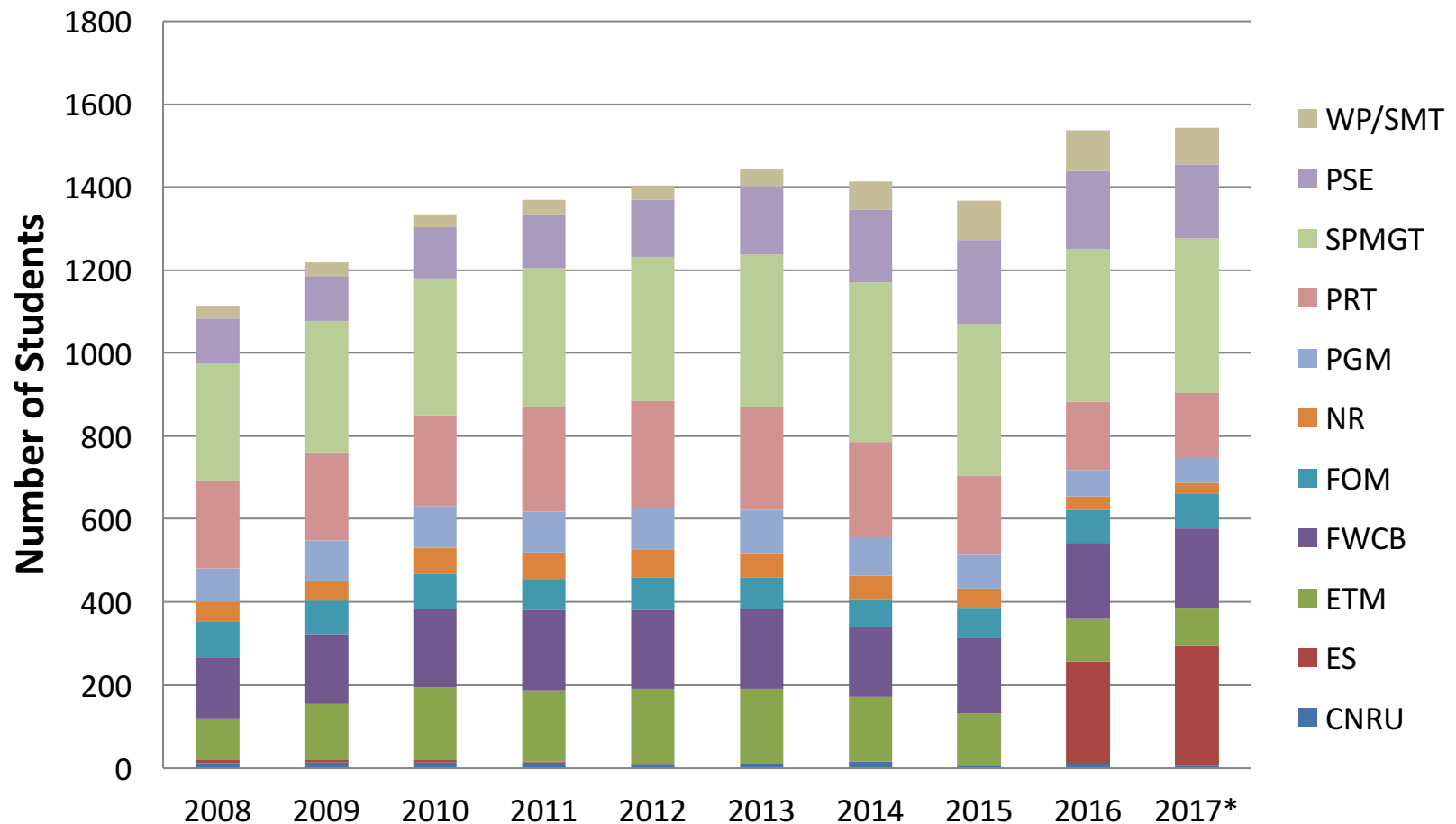
Undergraduate Admissions

| | First year* | Transfer | All Students* |
|------------------------|-------------|----------|---------------|
| Enrolled | 252 | 91 | 1553 |
| % Female | 38% | 34% | 36% |
| % Non-white | 10% | 15% | 12% |
| % Out-of-state | 18% | <1% | 13% |
| % International | 2% | 0 | 1% |

*Including EFY-PSE students

*Enrollment Data as of 8/17/17 (Official data will be available after Census Day)

Undergraduate Enrollment



*Enrollment Data as of 8/17/17 (Official data will be available after Census Day)

Graduate Student Admissions

New in Fall 2017: 69 MS/MR; 22 PhD students

| | MS/MR | PhD | All Students |
|---|--------------|------------|---------------------|
| Enrolled | 277 | 89 | 366 |
| % Female | 49% | 45% | 48% |
| % Non-white | 10% | 11% | 10% |
| % Out-of-state & International | 30% | 54% | 36% |

Graduate Student Enrollments



*Enrollment Data as of 8/17/17 (Official data will be available after Census Day)

CNR Budget – Expenditures FY17

| Fund Type | Dean | PRTM | FB | FER | Total |
|-------------------------|------------------|------------------|------------------|-------------------|-------------------|
| State App. Academic | 3,605,411 | 3,725,184 | 2,536,113 | 5,759,943 | 15,626,651 |
| Agricultural Research | 152,424 | 33,152 | 576,384 | 1,056,585 | 1,818,545 |
| Cooperative Extension | 12,846 | 137,891 | 398,807 | 893,225 | 1,442,769 |
| McIntire-Stennis* | 186,023 | 32,324 | 288,150 | 637,834 | 1,144,331 |
| Contracts & Grants | 915,132 | 1,027,940 | 1,721,862 | 6,274,325 | 9,939,259 |
| F&A Receipts | 246,742 | 111,617 | 101,136 | 199,134 | 658,628 |
| NR Foundations** | 877,085 | 156,252 | 1,608,280 | 519,127 | 3,160,744 |
| Gifts/Income (Ledger 7) | 194,489 | 8,829 | 378,561 | 1,647,812 | 2,229,691 |
| Endowment Income | 980,515 | 166,993 | 223,439 | 1,014,995 | 2,385,942 |
| Other*** | 339,337 | 150,126 | 966,001 | 448,745 | 1,904,209 |
| Totals | 7,510,004 | 5,550,307 | 8,798,732 | 18,451,725 | 40,310,768 |

*Actual expenditures for Federal FY16

**Foundations expenditures do not include HF expenses or Timber Deed income

***Service Centers, fees, and other miscellaneous funds



College Budget Outlook

- State appropriated budget relatively stable, but funding model changing
- Legislatively Directed Salary Increases (SHRA and EHRA)
- Timber Deed Income stable this year
- Contracts and Grants, Philanthropy increasing!

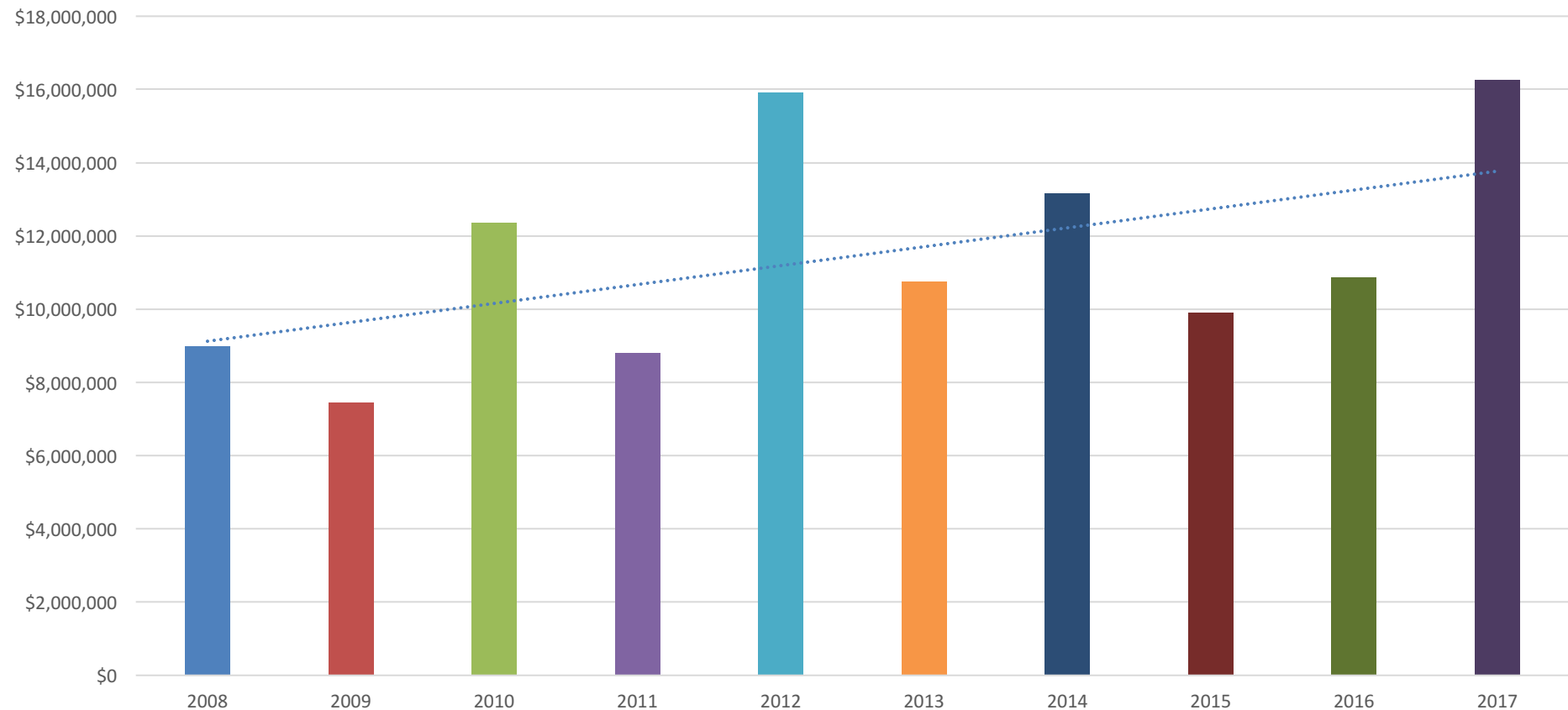
College Sponsored Projects

- Submitted 174 new proposals, a **total of \$60 M**, a substantial increase from \$33.2 M last year.
- **Received** 227 awards, a total of **\$16.2 M**, an increase from \$10.9 M last year.
- College Portfolio:
 - 229 Active Projects (195 last year)
 - Total Value = \$56 M (\$43.7 M last year)



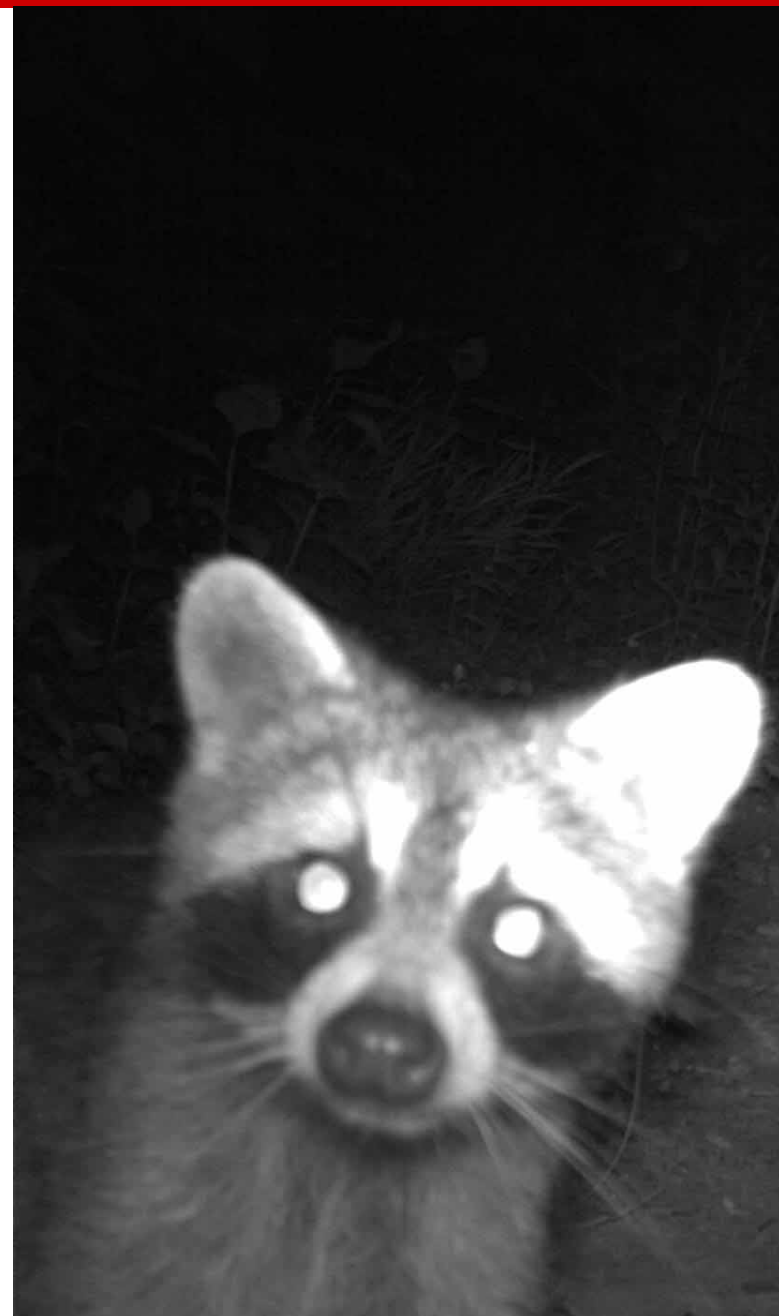
Sponsored Projects – Trends

Awards FY 07 - FY 17



Research Highlights

- **Dr. Richard Venditti** and colleagues in FB, FER and the College of Education were awarded a \$2.75M USDA NIFA grant for teacher training to advance the bioeconomy.
- **Dr. Roland Kays** received \$1M from the NC Wildlife Resources Commission to conduct statewide citizen science camera trap surveys of mammal populations.





Research Highlights

- **Drs. Carla Barbieri, Kathryn Stevenson and Whitney Knollenberg** were awarded a \$500K USDA NIFA grant focused on how agritourism influences middle school students and their parents' decisions on local foods.
- **Dr. Jason Delborne** and colleagues were awarded an NSF grant (\$292K) for a case study of public perceptions of Genetically Modified American Chestnut.

Research Highlights

- **Dr. Kevin Potter** and collaborators received a \$1M NSF grant to uncover the biological, geophysical and socioeconomic factors that lead to large-scale plant and insect invasions.
- **Drs. Josh Gray and Helena Mitasova** led a team awarded a \$250K grant to guide the use of unmanned aerial systems for wetland detection & delineation from the NC Department of Transportation.

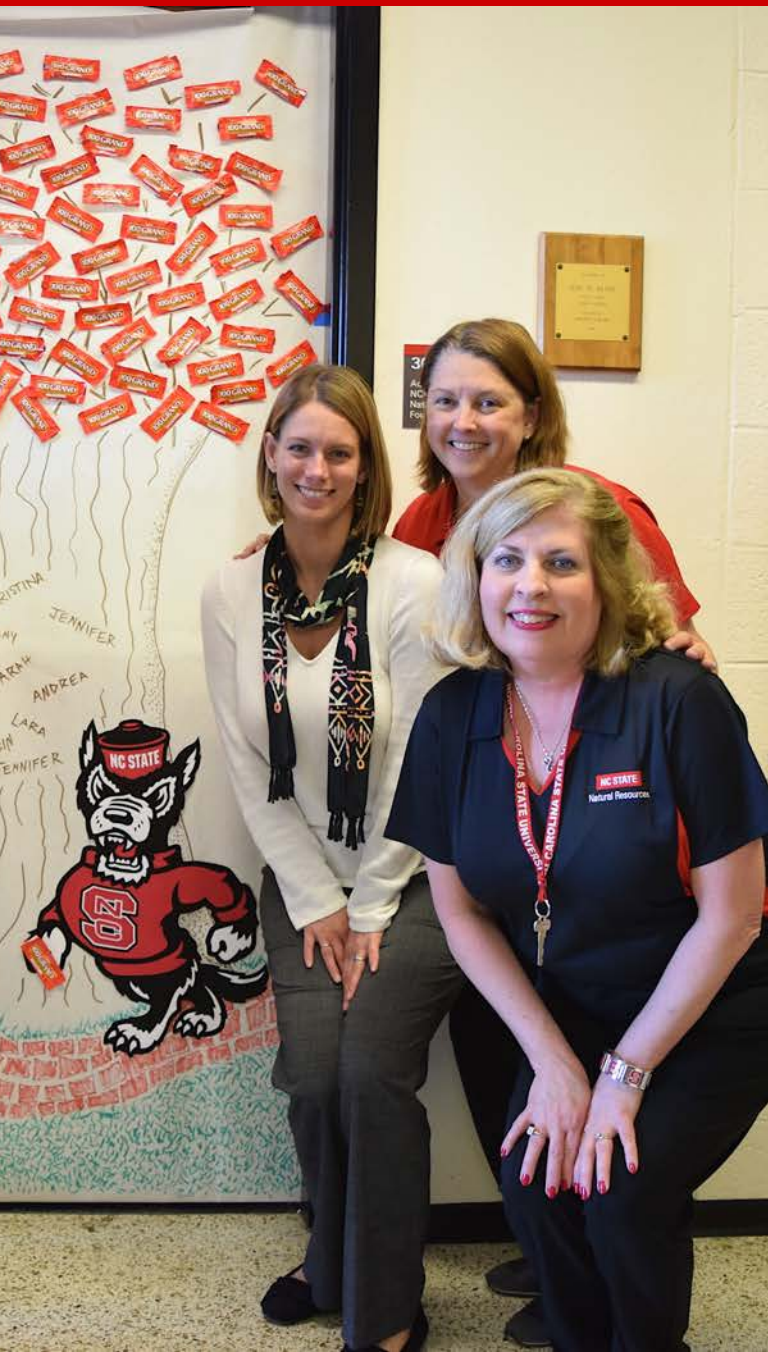




Innovation Highlights

- Patents issued: 2
- Patents filed: 3
- Invention Disclosures Filed: 23
- Commercialization agreements executed: 6
- Chancellor's Innovation Fund:
 - Drs. Duarte Morais and John Bass (CSC) to develop two-way SMS communications technology to enable underserved populations to access web-based networks.
 - Dr. Dimitris Argyropoulos, and colleagues in Chemistry and Biological Sciences, to commercialize anti-infective nanofibrillated cellulose materials that are active against bacteria, viruses and fungi.

College Advancement Office



- Raised **\$3,221,814** – a 33% increase from the last fiscal year and a 16% increase from the three-year average.
- As part of the **Think and Do the Extraordinary Campaign**, the College has a **\$35M goal**. As of June 30, we have raised 62% of our goal. The campaign ends in June 2021.
- **Communications Successes:**
>125 national and international news articles featured College faculty, staff and students.

Extension Highlights

Program impact:

- **Over 38,000 live and on demand webinar views**, with participants from all **50 states** earning over **8,300 contact hours** for professional development. By training online, participants in webinars **saved over \$7.9 million dollars in 2016**.
- **Provided 12 educational workshops** about NC Present Use Valuation program, **serving 987 participants** who could **save > \$100 million annually**.

Sentinel Landscapes Partnership:

Continuing to build programs in 33 county designated area in eastern N.C.





Forest Assets

- Hofmann Forest Timber Deed fully implemented, EPA mandated water management completed, research increasing.
- Highest priority maintenance renovations on Camp Slocum at Hill Forest (~\$55K) completed; working with NC State facilities to prepare a long-term maintenance plan.
- Updating management plans for other forest properties and working to achieve sustainable forest management certification (SFI).

Facilities Updates

- Renovated the Sustainable Materials and Technology office and collaboration spaces and the offices for the BioResources Journal (first floor Biltmore).
- Completed renovations in PRTM departmental offices and collaborative graduate student spaces.
- Currently renovating mailroom on 3rd floor Biltmore into offices for Forest Assets Team
- Dean's teams on 2nd and 3rd floor Biltmore will be shifting spaces – Advancement, Research, HR. More to come. . . .



College IT Updates

- **2FA Deadline** - October 31, 2017.
 - Last training session session Aug 28
 - Who will be first to complete – there will be a prize!
- **IT Group taking Facilities Responsibility for Biltmore** – more information coming soon, including new forms to route requests
- **ServiceNow** - exploring options for calendar, communications, research and onboarding
- **Internet Wiring Project** - green cables hanging from the ceiling. . .





New This Year in FER

Military Lands Sustainability Certificate

- Train professionals to manage natural resources on and around military bases to preserve natural resources and maintain military readiness

Environmental Assessment Master's Program

- On-line Professional Degree program
- FER sole administrator (AE/CALS left)
- Significantly increases CNR graduate student numbers
- Broadening the scope to include military lands sustainability, wetlands, fire and renewable energy

New This Year in PRTM

Sport and Entertainment Venue Management Certificate

- One-year on-line accelerated program designed with industry experts to advance careers of professionals who manage stadiums, performing arts centers, amphitheaters or arenas.





New This Year in FB

Online MS program reboot

- Creating a modular professional masters program targeted at continuous education supporting the paper industry
- Hiring an on-line teaching technician



New in Geospatial Analytics

PhD in Geospatial Analytics

- Fully approved by UNC-GA this spring.
- Will launch Fall 2018
- Interdisciplinary data science degree program, bringing together faculty from FER, PRTM, and 6 other departments across the campus

Awards and Acknowledgements

- Dr. Ron Sederoff wins the **2017 Marcus Wallenberg Foundation Prize** (often called the Nobel Prize in Forestry). Ron will be honored by the King and Queen of Sweden in October.
- Dr. Sunkyu Park named **the E. J. "Woody" Rice** Associate Professor in Paper Science and Engineering.





Awards and Acknowledgements

- **Dr. Bob Abt** was named the **Carl Alwin Schenck Professor** in Forestry.
- **Dr. Carla Barbieri** received the **Emerging Scholar Award** from the International Academy for the Study of Tourism. Receiving this award is the first step to being elected as a Fellow in the Academy.



Some Goals for the Year:

LISTENING, COMMUNICATION

- **DoNuts with the Dean**
 - 9/13 at 8:30am (Faculty)
 - 9/15 at 9:30am (Staff)
- **Gabbing with the Grads**
 - 9/21 at 2:30pm
- Undergraduate student listening sessions - TBA
- Internal monthly newsletter
- External Communication - Continuing Honest Broker work
- More to come . . .



Some Goals for the Year:

GRADUATE EDUCATION

- Social event for graduate students and faculty (fall)
- Graduate Student Research Day (spring)
- Comprehensive communication about our programs, our assistantships – to build our reputation

Some Goals for the Year:

DIVERSITY

- Cultural Competency and Inclusion training for faculty and staff
- **RACE: Are We So Different?**
 - Natural Science Museum week of 10/2/17
 - Admission is free, but tickets are required
 - Cultural conversations to follow, week of 10/9/17
- **Project SAFE training** – become a GLBT Ally, Sept. 13, 3:30-5pm.



Make Good Things Happen!

